



RSA

Driver spotlight report: fatalities and serious injuries

2019-2023

Data is current as of 21 July 2024
Prepared by the Research Department of the RSA
Date of issue 10 October 2024



VISION
ZERO

Background

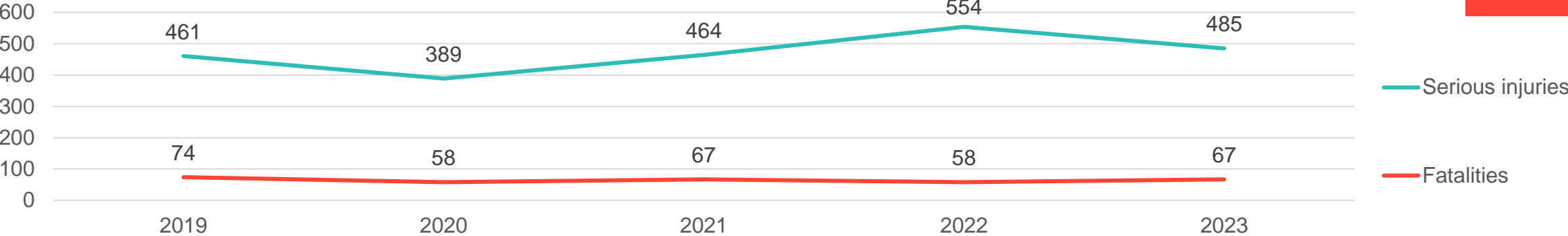
- This presentation provides an overview of **fatalities and serious injuries among drivers** for the years 2019-2023.
- This report was prepared using data from the Irish Road Traffic Collision Database, which is based on collision records transferred from An Garda Síochána to the RSA.
- All information in this report **is provisional and subject to change**.
- This means that the fatality and serious injury statistics presented may change at a later date when new information becomes available.
- Note that the information in this report is based on **preliminary findings of the AGS investigation, at an early stage in the process**. It does not contain information on contributory factors from the final completed investigation process.

Definitions

- A **fatality** is one where death occurs within 30 days of the date of the collision and is not the result of a medical cause or that of a deliberate act (e.g. suicide).
- A **serious injury** is one for which the person is detained in hospital as an in-patient, or any of the following injuries whether or not detained in hospital:
 - Fractures
 - Concussion
 - Internal Injuries
 - Crushing
 - Severe Cuts and Lacerations
 - Severe general shock requiring medical treatment

Trend of Driver fatalities and serious injuries

2019-2023



| Injury (% of total) | 2019 | 2020 | 2021 | 2022 | 2023 |
|---------------------|------|------|------|------|------|
| Fatalities | 53% | 40% | 50% | 38% | 36% |
| Serious injuries | 31% | 32% | 34% | 33% | 33% |

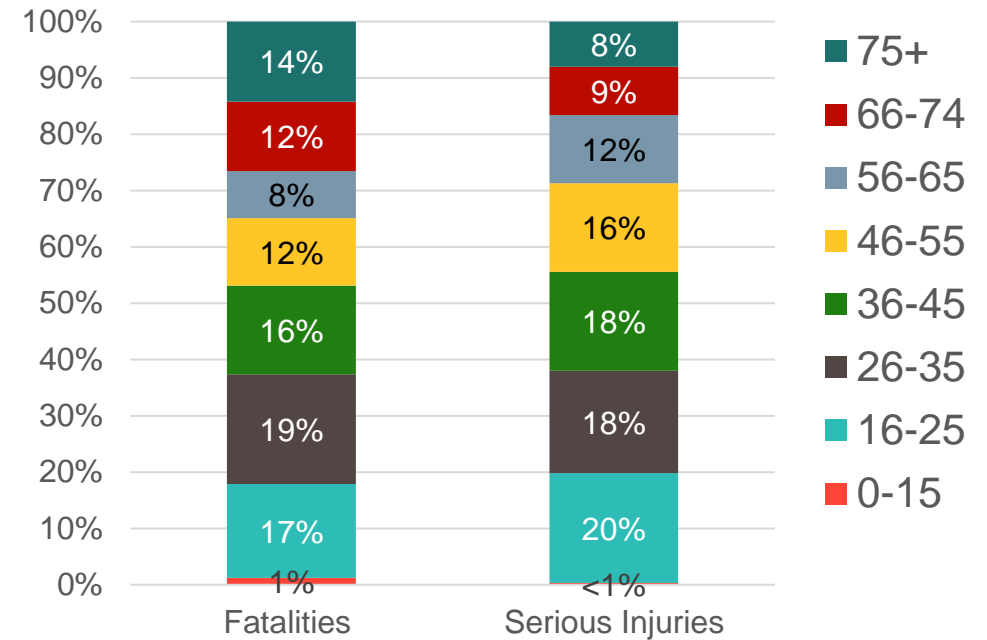
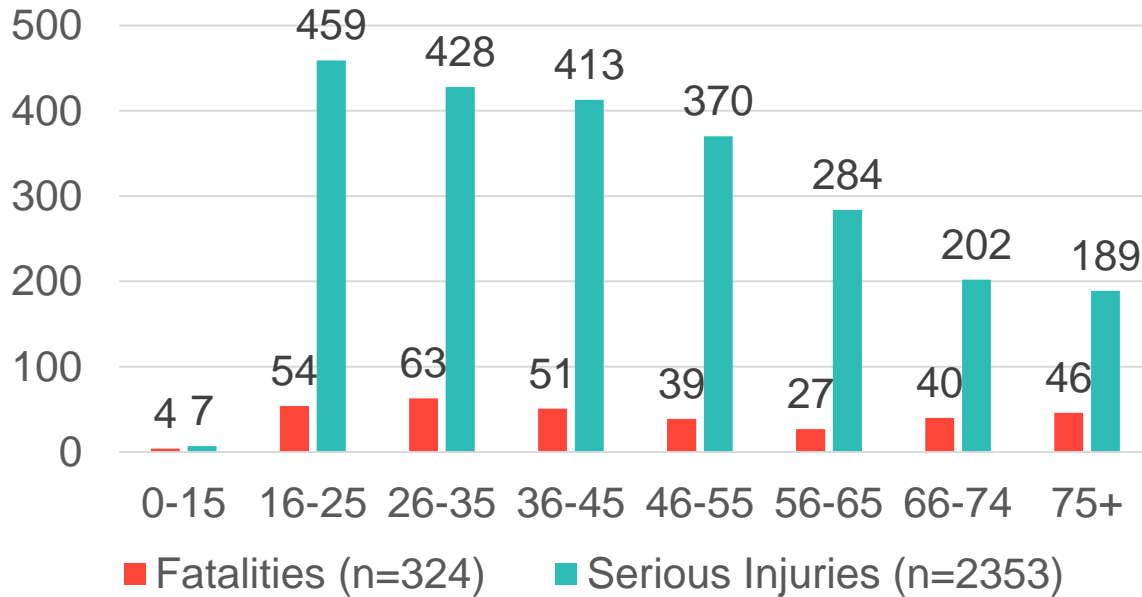
- Between 2019 and 2023, 324 drivers were killed, and 2,353 drivers were seriously injured.
- An average of 65 drivers were killed and an average of 471 drivers were seriously injured each year during this five-year period.
- Drivers represent 43% of fatalities and 33% of serious injuries during this time period
- For every driver fatality there were approximately 7 drivers seriously injured.
- There was a decline in the percentage share of fatalities among drivers in 2022 and 2023 compared to the previous three years.

Note, figures for 2020-2023 are provisional and subject to change. There can be fluctuations in serious injury numbers until such a time as the data is deemed to be final.



Driver fatalities and serious injuries by age group

2019-2023



One in two driver fatalities (52%) were aged 16-45 years and one in two (55%) seriously injured drivers were aged 16-45 years.

A quarter (27%) of fatalities were aged 66+ years compared to 17% of seriously injured drivers.

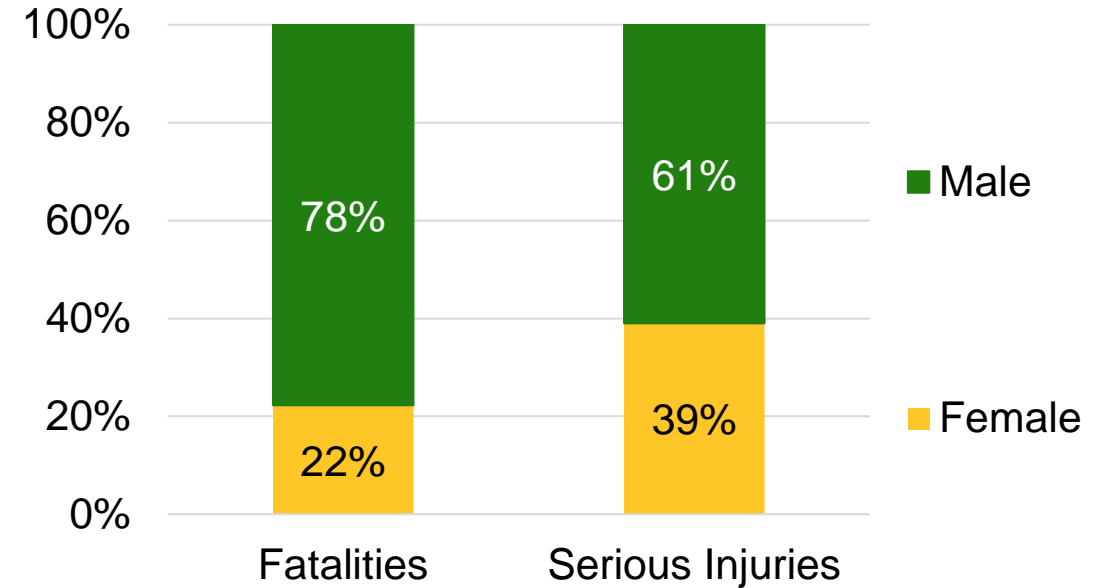
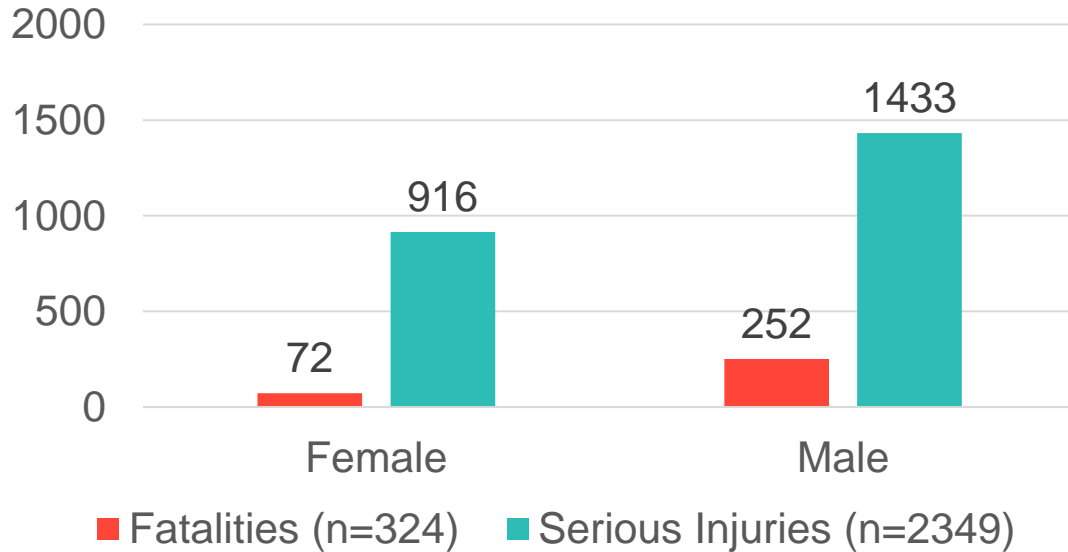
Note, figures are provisional and subject to change. Age of one seriously injured driver is currently unknown. Percentages may not add to 100% due to rounding of percentages.

Driver fatalities and serious injuries by gender

VISION ZERO

RSA

2019-2023

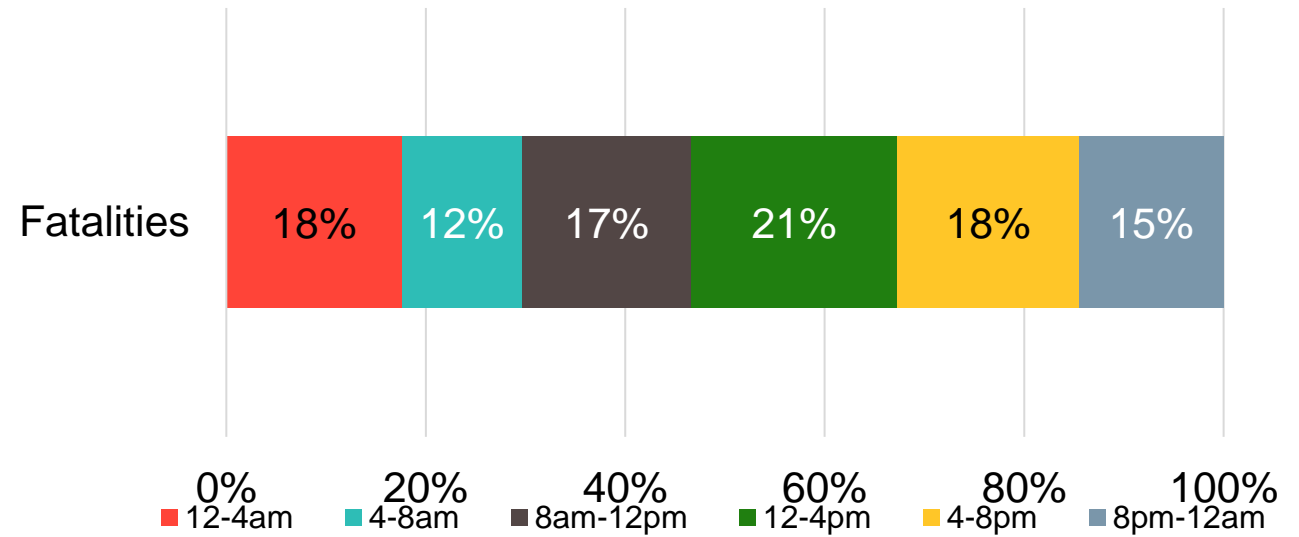
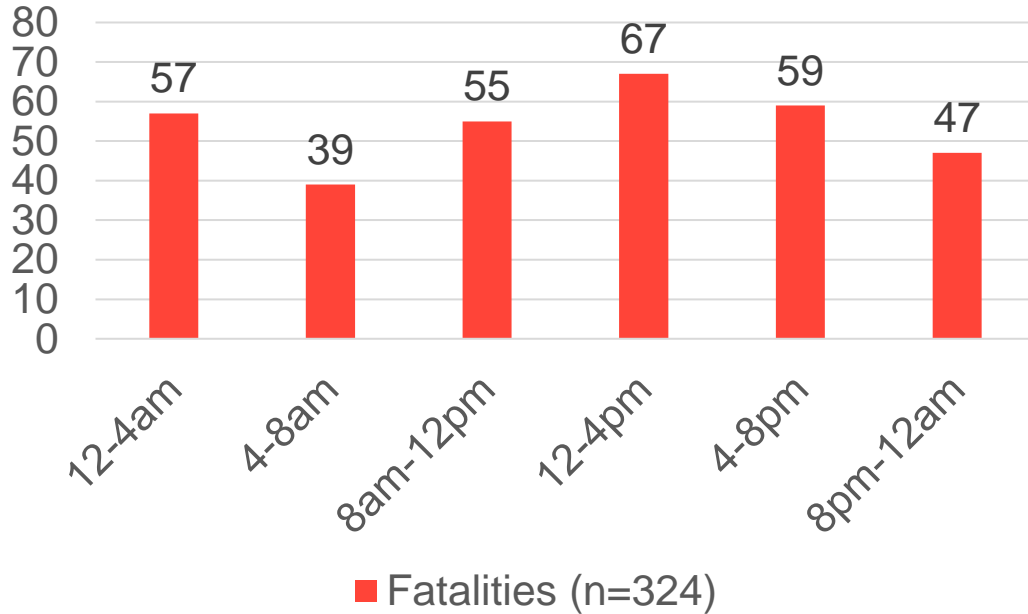


Almost eight in ten (252, 78%) of driver fatalities were male, while of seriously injured drivers six in ten (1433, 61%) were male.

Note, figures are provisional and subject to change. Note, gender of four seriously injured drivers are unknown at present.

Driver fatalities by time of day

2019-2023

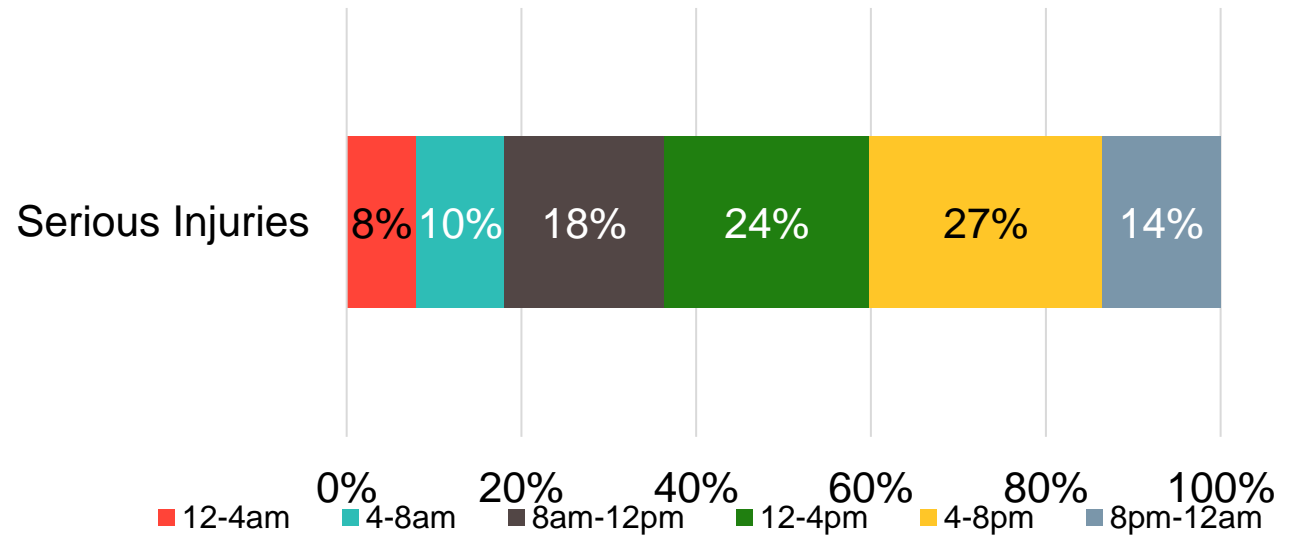
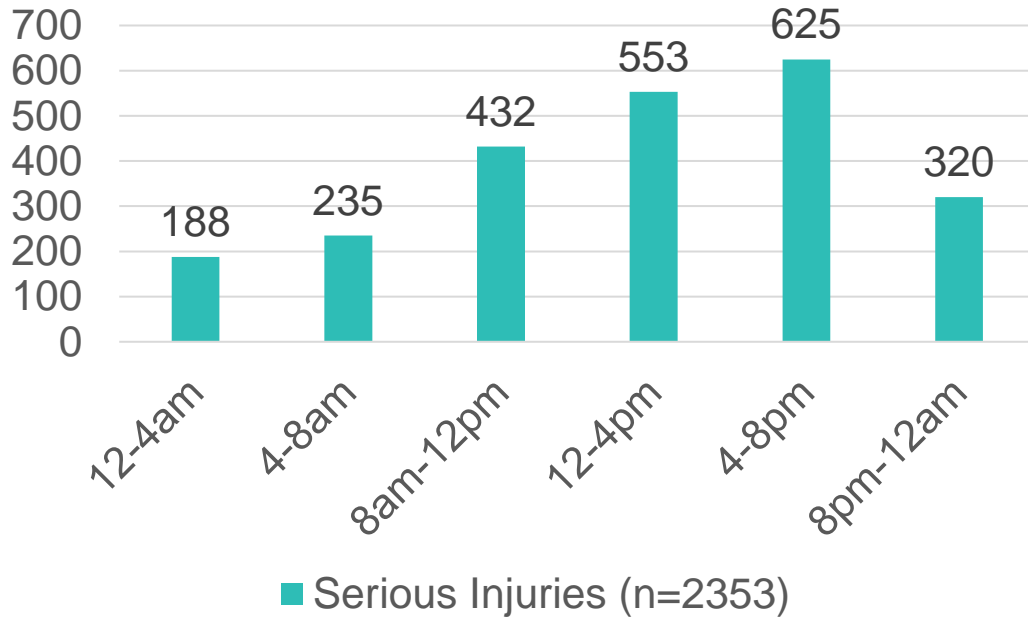


Almost two in five fatalities (126, 39%) occurred between 12pm and 8pm. A further 18% (57) of fatalities occurred between midnight and 4am, of which 36 fatalities occurred between midnight-2am (11%).

Note, figures are provisional and subject to change. Percentages may not add to 100% due to rounding of percentages.

Driver serious injuries by time of day

2019-2023



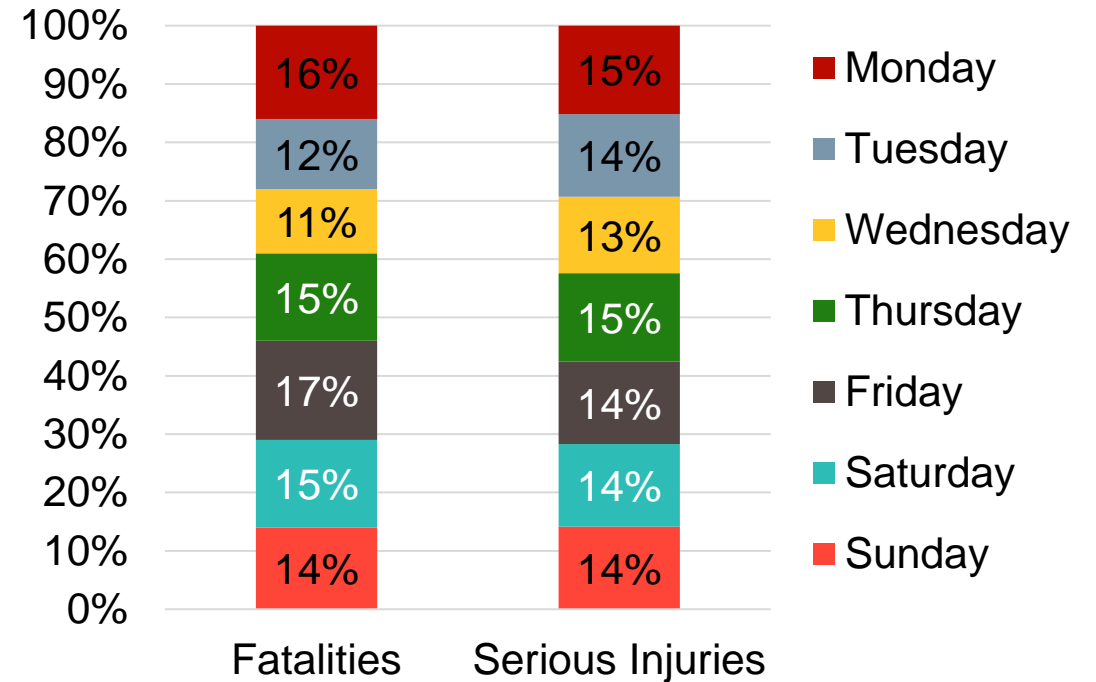
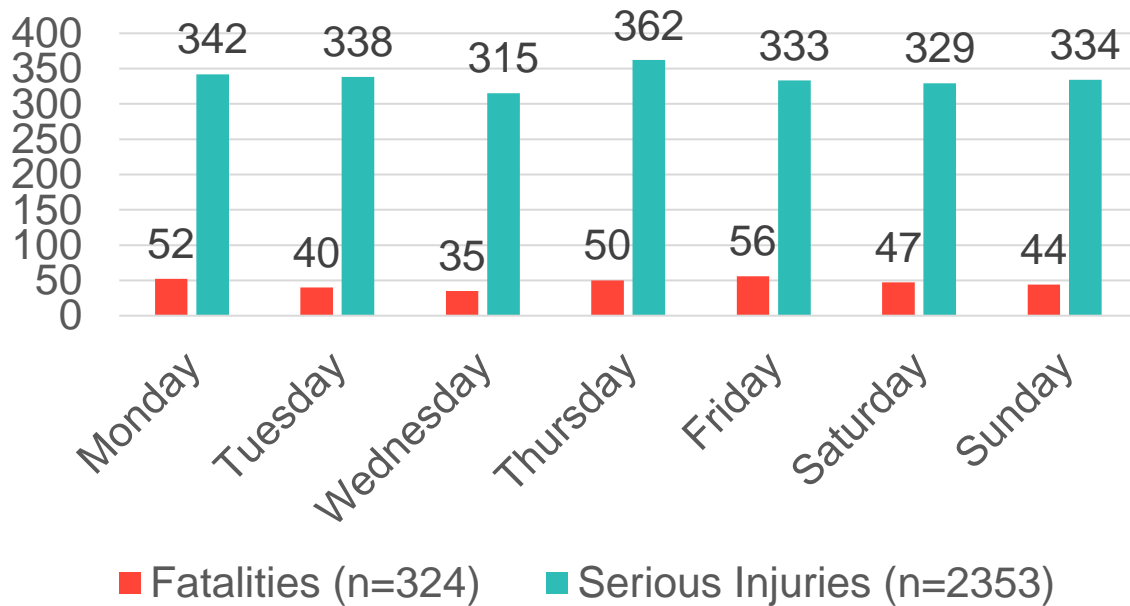
Serious injuries peak in the early afternoon into the evening. Half of serious injuries (1178, 50%) occurred between 12pm and 8pm.

High percentage shares of serious injuries occurred during commuting time bands: 230 (10%) occurred between 7-9am and 369 (16%) between 4-6pm.

Note, figures are provisional and subject to change. Percentages may not add to 100% due to rounding of percentages.

Driver fatalities and serious injuries by day of week

2019-2023



Over a quarter (91, 28%) of driver fatalities and over a quarter (663, 28%) of seriously injured drivers were injured on a weekend day (Saturday or Sunday).

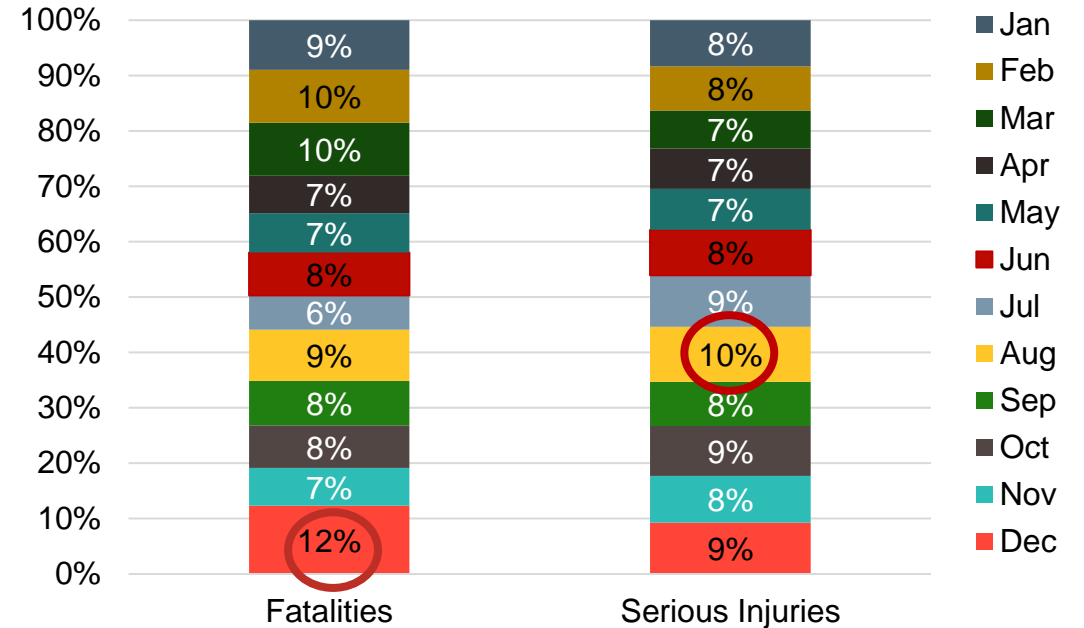
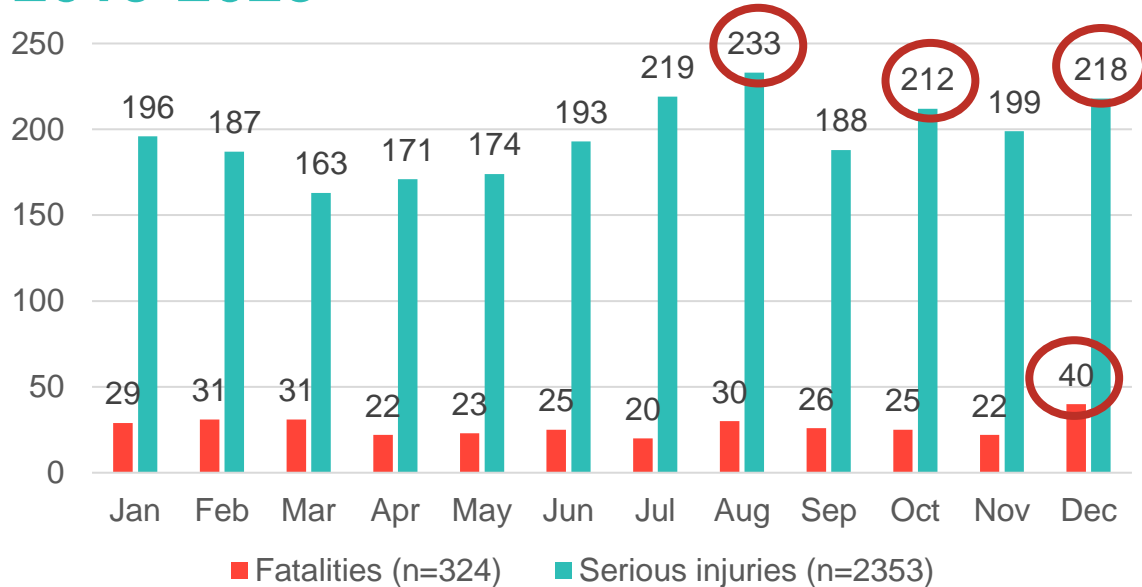
Friday was the most dangerous (56, 17%) for fatalities, Thursday most dangerous (362, 15%) for seriously injured drivers

Note, figures are provisional and subject to change. Percentages may not add to 100% due to rounding of percentages.

Driver fatalities and serious injuries by month of year



2019-2023



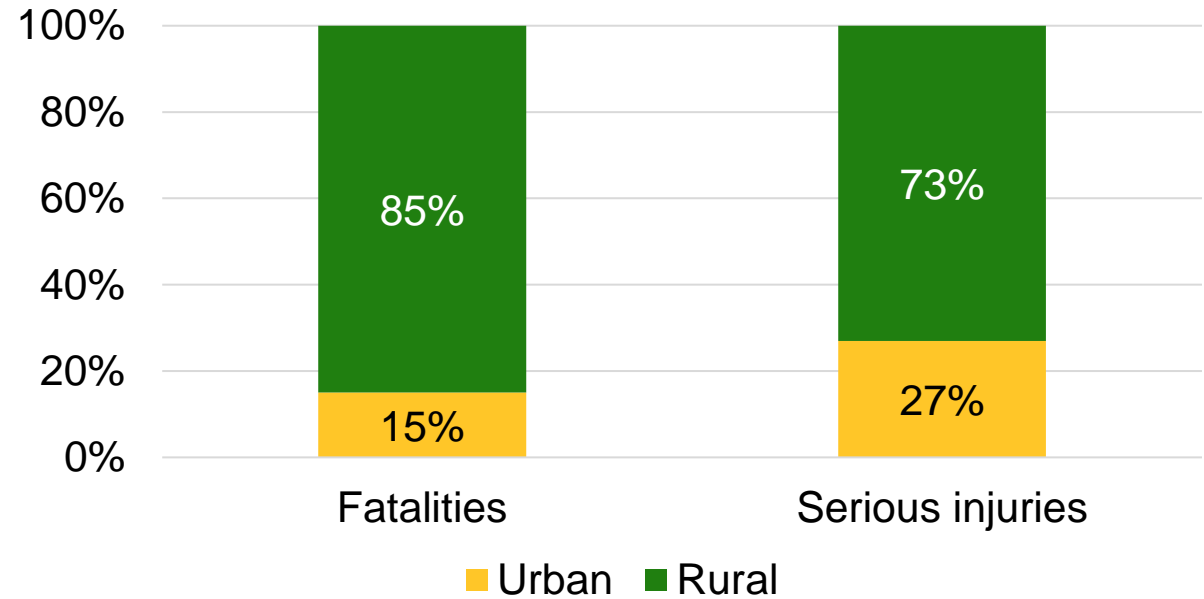
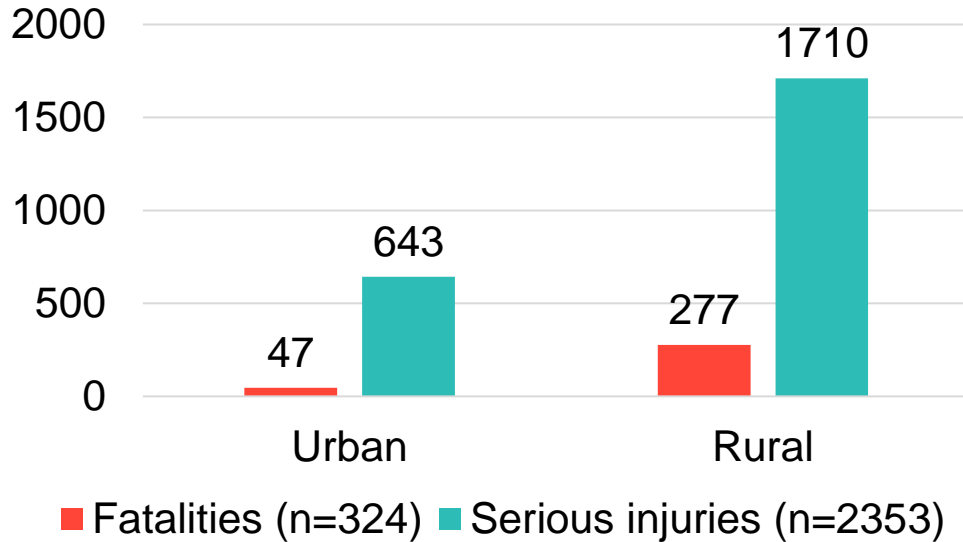
Highest proportion of fatalities (40, 12%) occurred in December, while high numbers of serious injuries occurred in August (10%, 233), October (9%, 212) and December (9%, 218). A steady increase in serious injuries is seen from April to August, with the peak-time for serious injuries in August (233, 10%).

Note, figures are provisional and subject to change. Percentages may not add to 100% due to rounding of percentages.



Driver fatalities and serious injuries by urban/rural area

2019-2023



An urban road has a speed limit of 60km/h or less, while a rural road has a speed limit of 80km/h or more.

Over eight in ten driver fatalities occurred on rural roads (277, 85%), and over seven in ten drivers were seriously injured on rural roads (1710, 73%).

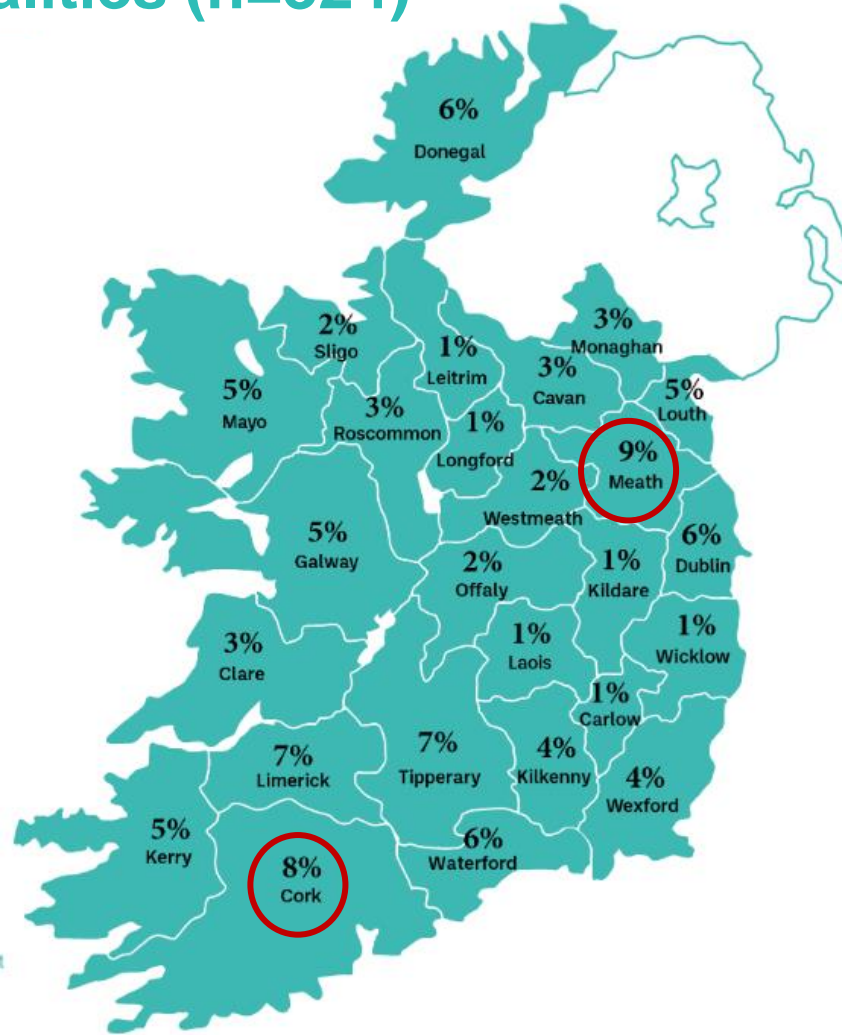
Note, figures are provisional and subject to change.



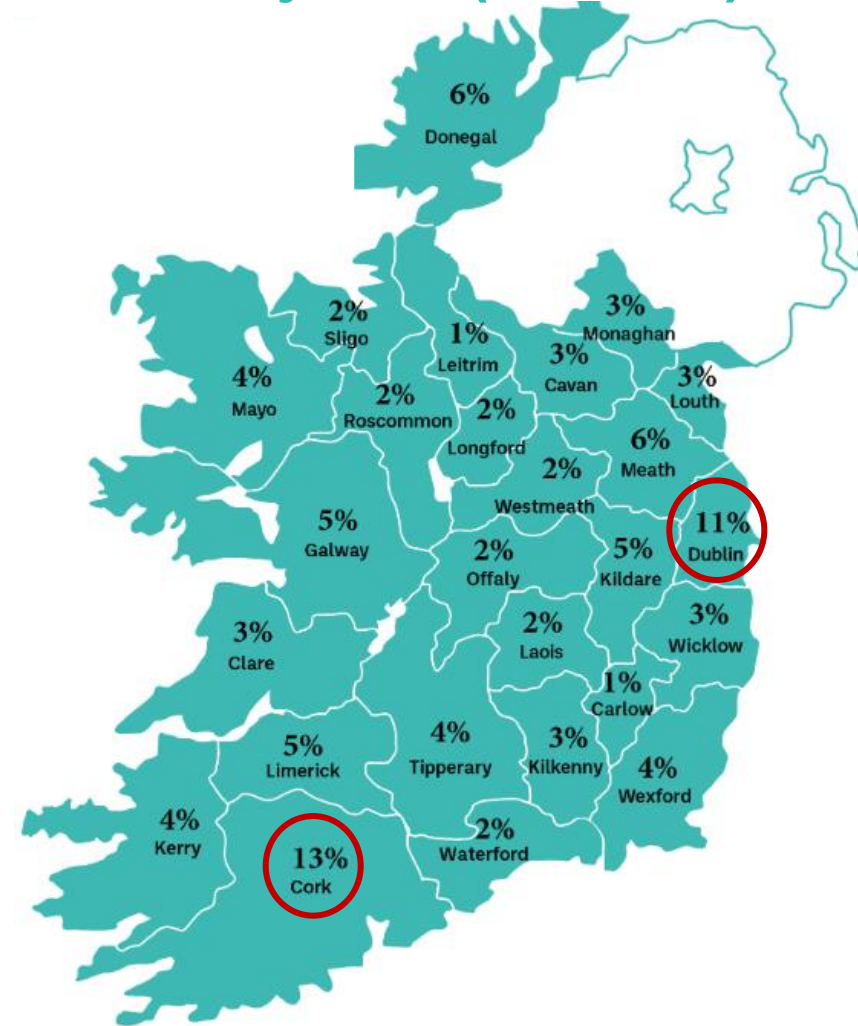
Driver fatalities and serious injuries by county 2019-2023

RSA

Fatalities (n=324)



Serious injuries (n=2,353)



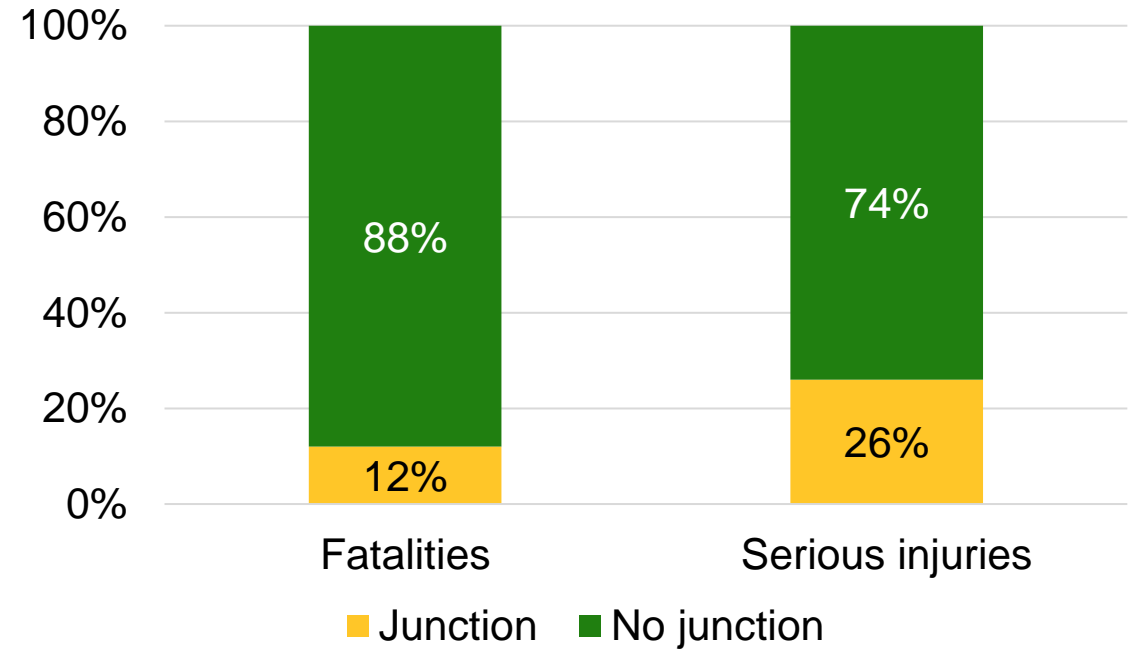
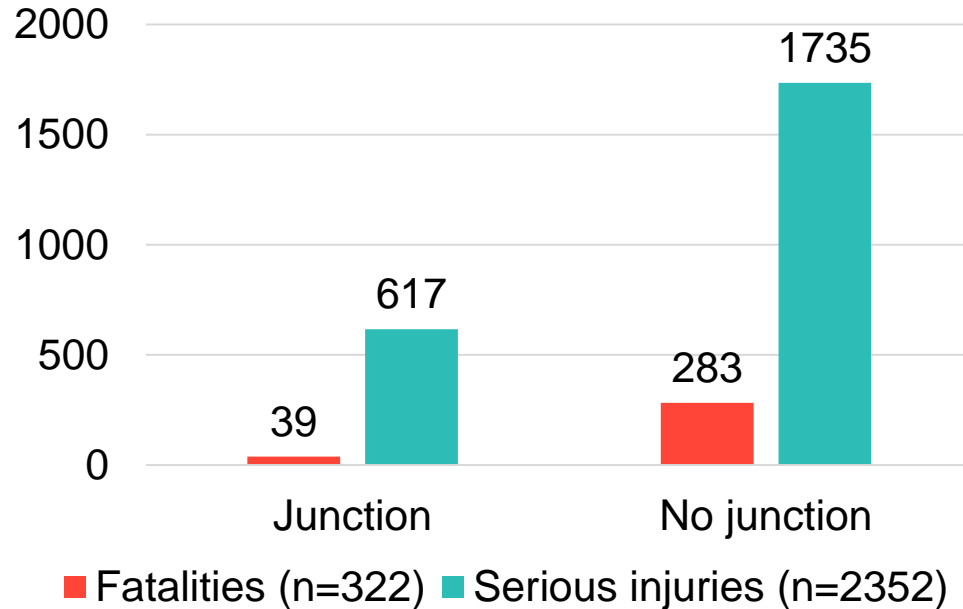
Note, figures are provisional and subject to change.

Driver fatalities and serious injuries by junction

VISION ZERO



2019-2023



Of fatalities, 12% occurred at a junction, while 26% of serious injuries occurred at a junction. Of those injured at a junction, the junction type was most likely to have been a T-junction (49% fatalities and 48% serious injuries at a junction occurred at a T-junction).

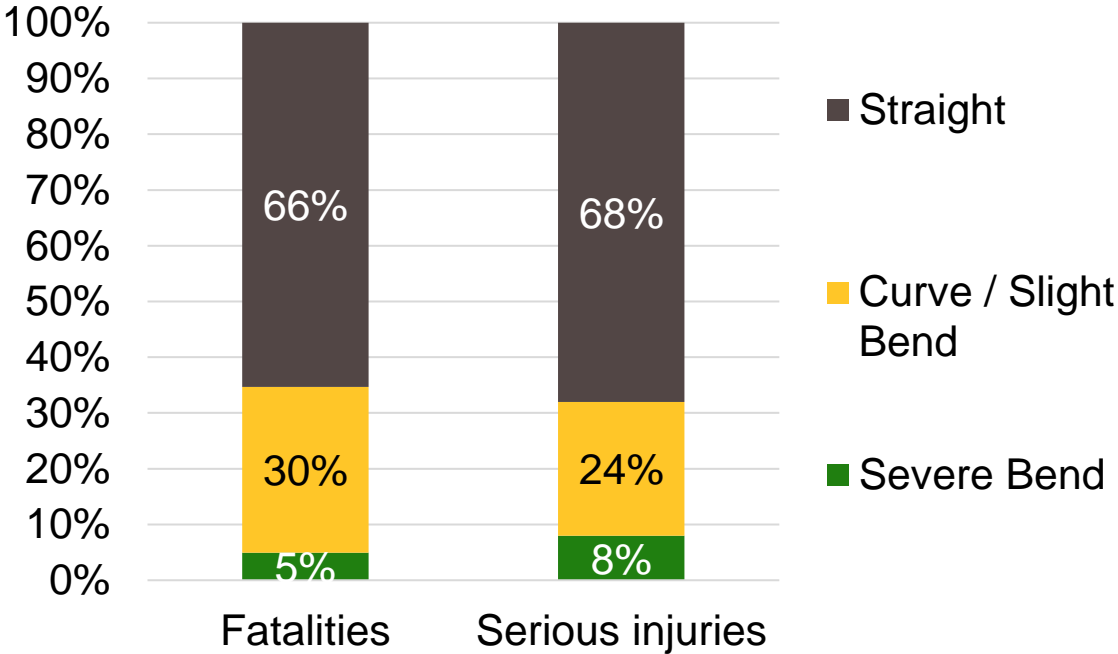
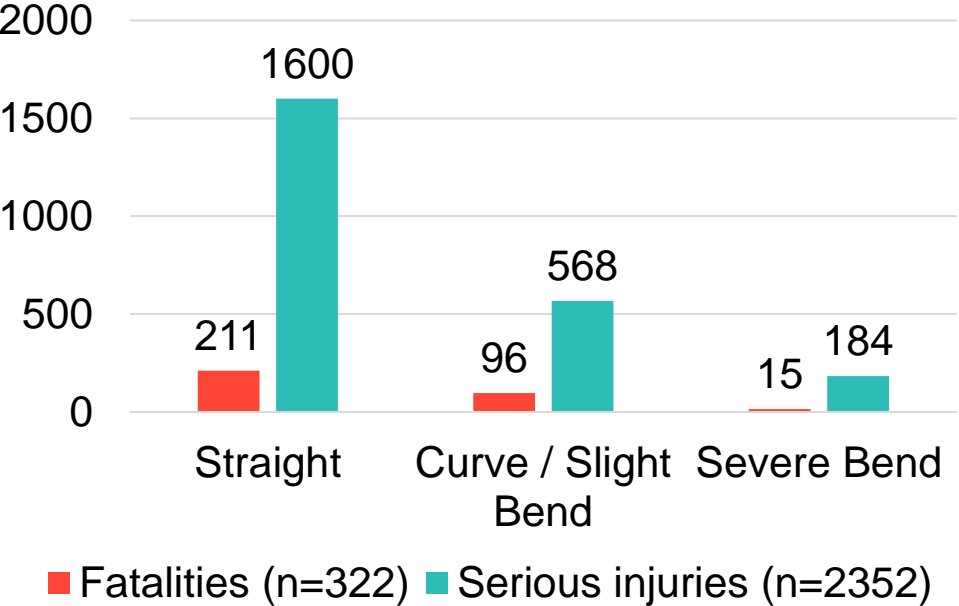
Note, figures are provisional and subject to change. Junction unknown for two fatally injured driver and for one seriously injured driver at present.



Driver fatalities and serious injuries by road character



2019-2023



High proportions of fatalities (211, 66%) and serious injuries (1600, 68%) occurred on a straight road. Three in ten (96, 30%) fatalities and almost one in four (568, 24%) serious injuries occurred on a road with a curve or slight bend.

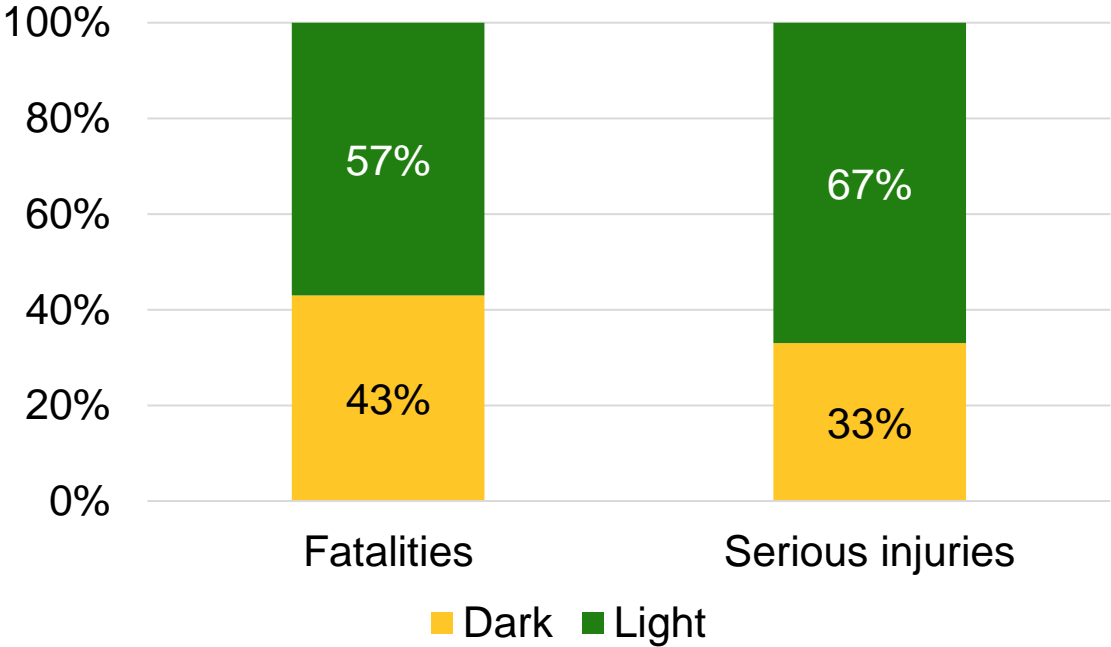
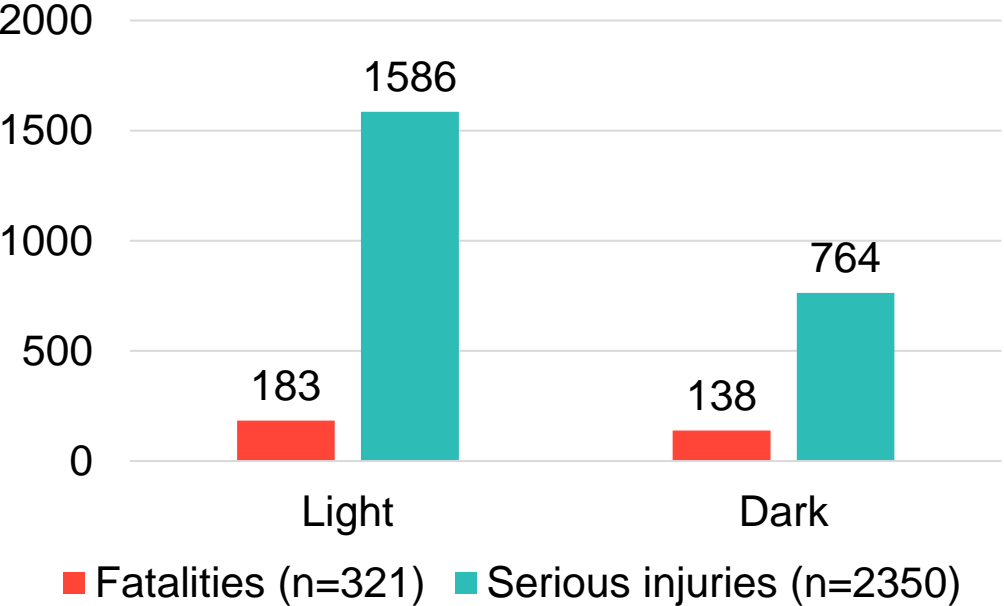
Note, figures are provisional and subject to change. Road character unknown for two fatally injured drivers and one seriously injured driver at present. Percentages may not add to 100% due to rounding of percentages.



Driver fatalities and serious injuries by light conditions



2019-2023



Almost three in five driver fatalities (57%) and two in three driver serious injuries (67%) occurred in day light.

Note, figures are provisional and subject to change. Light conditions unknown for three fatally injured drivers and three seriously injured drivers.

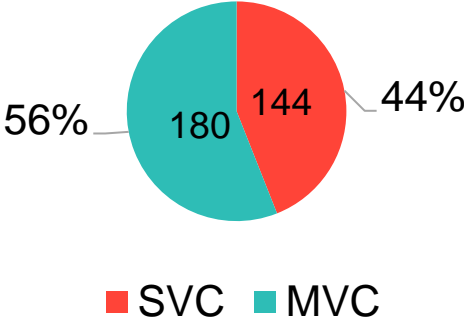


Driver fatalities and serious injuries by collision type



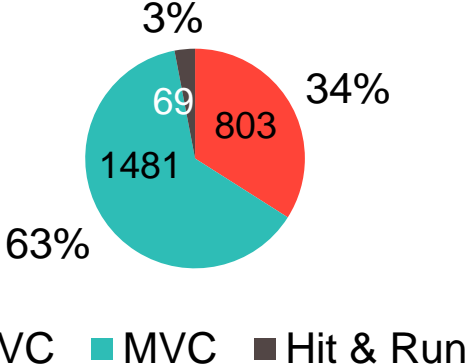
2019-2023

Fatalities (n=324)



- Of fatalities, 44% were involved in a single vehicle collision and 56% were involved in a multiple vehicle collision.
- Of those in drivers killed in single vehicle collisions, 47 (33%) collided with a wall, 29 (20%) collided with a road edge ditch and 26 (18%) collided with a tree.
- Of those killed in multiple vehicle collisions, 133 (74%) were injured in a head-on collision

Serious injuries (n=2,353)



- Of seriously injured drivers, 34% were involved in a single vehicle collision, 63% were involved in a multiple vehicle collision and 3% were involved in a hit and run collision.
- Of those drivers injured in single vehicle collisions, 237 (30%) collided with a road edge ditch, 185 (23%) collided with a wall, and 54 (7%) collided with a pole/post
- Of those injured in multiple vehicle collisions, 720 (46%) were injured in a head-on collision.

Note, figures are provisional and subject to change. A single vehicle collision involved the driver's vehicle only, while a multiple vehicle collision involved at least one other vehicle.

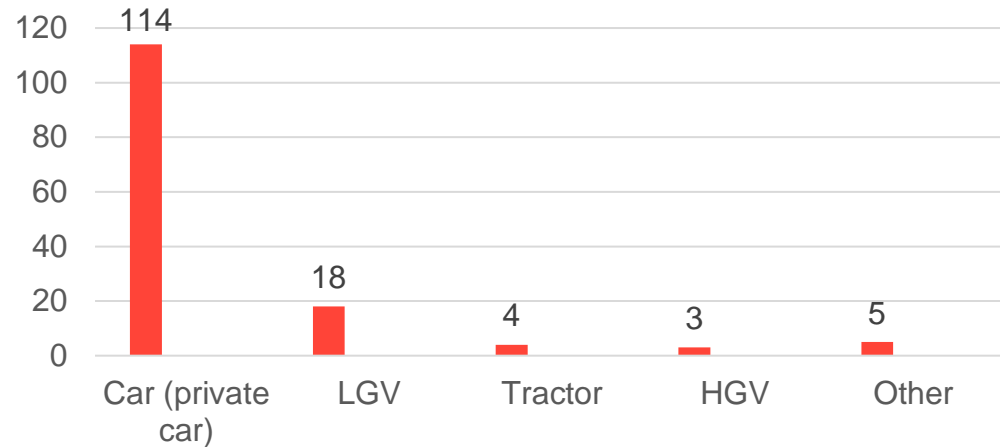


Driver fatalities and serious injuries in single vehicle collisions (SVCs) by vehicle type



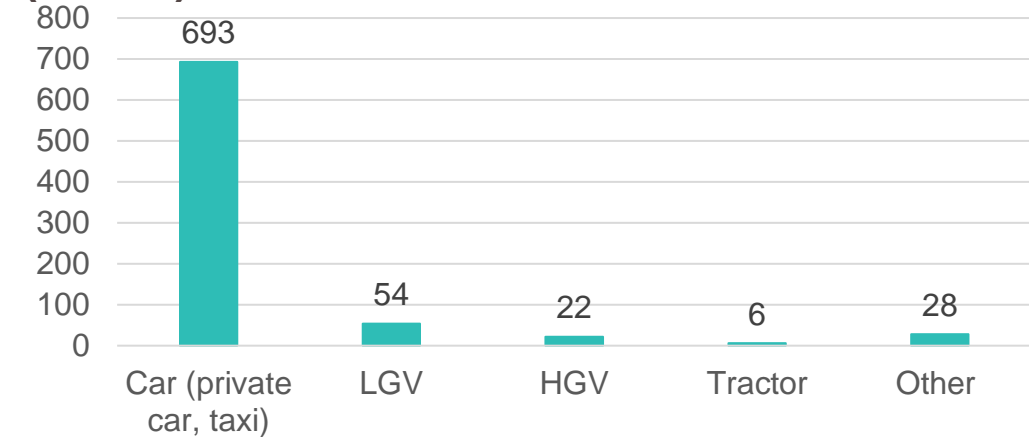
2019-2023

Drivers killed in SVCs by vehicle type (n=144)



Of driver fatalities involved in single vehicle collisions, the driver was most likely to be driving a car (114, 79%).

Drivers seriously injured in SVCs by vehicle type (n=803)



Of seriously injured drivers involved in single vehicle collisions the driver was most likely to be driving a car (693, 86%).

Note, figures are provisional and subject to change. A single vehicle collision involved the driver's vehicle only.






Driver actions and vehicle actions




Drivers killed and seriously injured in single vehicle collisions

2019-2023

Fatalities in single vehicle collisions (n=144)

-  The most noted action among these driver fatalities was lost control (63, 44%)
-  Of these drivers, the majority were driving forward (138, 96%)
-  104 (72%) of these drivers were the sole occupant of their vehicle

Seriously injured drivers in single vehicle collisions* (n=803)

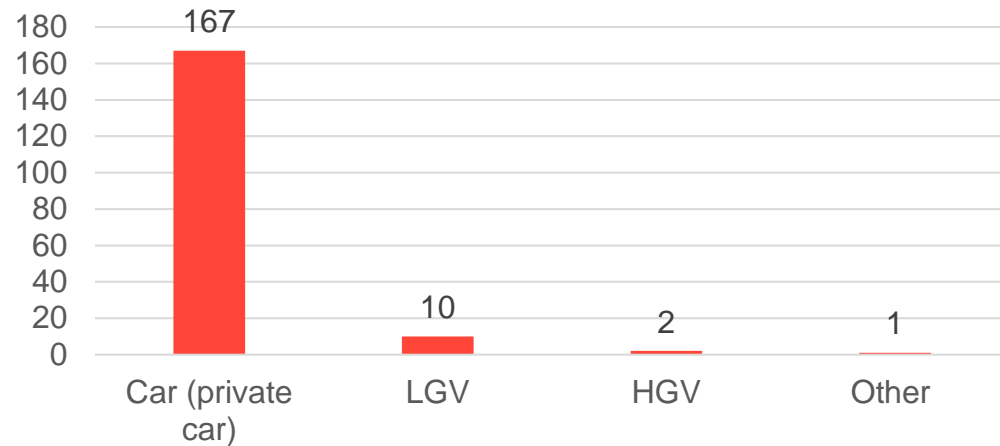
-  The most noted action among these seriously injured drivers was lost control (404, 50%)
-  Of these drivers, the majority were driving forward (763, 95%)
-  616 (77%) of these drivers were the sole occupant of their vehicle

Note, figures are provisional and subject to change.

Driver fatalities and serious injuries in multiple vehicle collisions (MVCs) by vehicle type

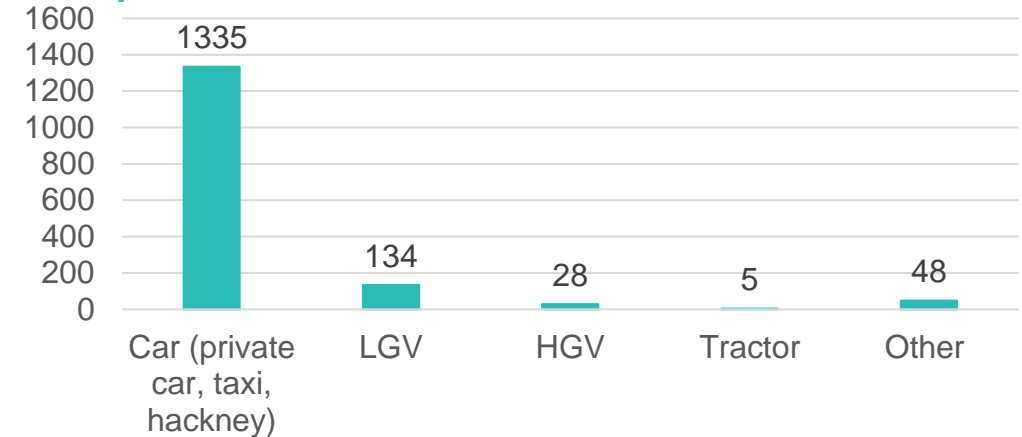
2019-2023

Drivers killed in MVCs by vehicle type (n=180)



Of driver fatalities involved in multiple vehicle collisions, the driver was most likely to be driving a car (167, 93%).

Drivers seriously injured in MVCs by vehicle type (n=1550)



Of seriously injured drivers involved in multiple vehicle collisions the driver was most likely to be driving a car (1335, 86%).



Note, figures are provisional and subject to change. A single vehicle collision involved the driver's vehicle only, while a multiple vehicle collision involved at least one other vehicle.

Driver actions and vehicle actions



Drivers injured in multiple vehicle collisions (n=324)

2019-2023

Fatalities in multiple vehicle collisions (n=180)

-  The most noted action among these driver fatalities was 'went to wrong side of road' (52, 29%)
-  A large proportion of these drivers were driving forward at the time of the collision (150, 83%)

Seriously injured drivers in multiple vehicle collisions (n=1550)

-  The most noted actions among these drivers were 'failed to observe' (283, 18%), and 'went to wrong side of road' (130, 8%)
-  A large proportion of these drivers were driving forward at the time of the collision (1209, 78%) and a lesser proportion were turning right (124, 8%)

Note, figures are provisional and subject to change.

Licence Type of driver fatalities and serious injuries



2019-2023

- Of driver casualties:
 - 8 in 10 had a full licence.
 - 5% had a foreign licence
 - 5% had no licence
 - 5% had a learner permit

| Licence type of killed and seriously injured drivers | | | | | | |
|--|------------|-------------|-------------------|-------------|-------------|-------------|
| | Fatalities | | Seriously injured | | Total | |
| | n | % | n | % | n | % |
| Full licence | 236 | 73% | 1921 | 82% | 2157 | 81% |
| Foreign licence | 20 | 6% | 117 | 5% | 137 | 5% |
| No licence | 24 | 7% | 112 | 5% | 136 | 5% |
| Learner unaccompanied | 13 | 4% | 94 | 4% | 107 | 4% |
| Learner accompanied | 1 | <1% | 23 | 1% | 24 | <1% |
| Disqualified | 9 | 3% | 21 | 1% | 30 | <1% |
| Exempt Driver | 0 | <1% | 4 | <1% | 4 | <1% |
| Novice Driver Licence | 0 | <1% | 3 | <1% | 3 | <1% |
| At present unknown | 21 | 6% | 58 | 2% | 79 | 3% |
| Total | 324 | 100% | 2353 | 100% | 2677 | 100% |

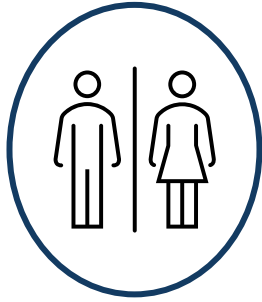
Note, figures are provisional and subject to change. While some values in the table above are not actual licence categories, please note, the data is recorded in this way in the collision database.



Summary of driver fatalities and serious injuries, 2019-2023

VISION
ZERO

RSA



Age and gender

Over half were **aged 16-45 years**.

Almost eight in ten fatalities and six in ten seriously injured drivers were **male**.



Time, day, month

Almost two in five fatalities and half of serious injuries between **12pm-8pm**.

Friday most dangerous (17%) for fatalities, **Thursday** most dangerous (15%) for seriously injured drivers

Steady increase in **serious injuries** from **April to August**, with the **peak-time** for serious injuries in **August (10%)**. Highest number of driver fatalities in **December (12%)**



Location

Over eight in ten driver fatalities and over seven in ten seriously injured drivers injured on **rural roads**.

High proportions of fatalities and serious injuries were **not** sustained **at a junction**, and **high proportions** were sustained on **straight road**.



Collision type

Almost three in five fatalities and two in three driver serious injuries occurred in **daylight hours**.

Over half of drivers killed, and two in three drivers seriously injured were injured in **multiple vehicle collisions**.

Note, figures are provisional and subject to change.

Drivers involved in fatal and serious injury collisions

Supplementary analysis

All drivers involved in fatal collisions

2019-2023

Injury status of all drivers involved in fatal collisions (n=903 drivers)



2019-2023

- There were 903 drivers involved in fatal collisions between 2019-2023.
- Not all drivers involved in fatal collisions were fatally injured.
- Of those 903 drivers involved, 36% (324) were fatally injured, 8% (76) seriously injured, 15% (133) minorly injured and 41% (370) were not injured.

| Injury of driver involved | 2019 | | 2020 | | 2021 | | 2022 | | 2023 | | Total | |
|---------------------------|------------|-------------|------------|-------------|------------|-------------|------------|-------------|------------|-------------|------------|-------------|
| | n | % | n | % | n | % | n | % | n | % | n | % |
| Fatal | 74 | 44% | 58 | 35% | 67 | 39% | 58 | 30% | 67 | 33% | 324 | 36% |
| Serious | 9 | 5% | 17 | 10% | 14 | 8% | 15 | 8% | 21 | 10% | 76 | 8% |
| Minor | 25 | 15% | 19 | 11% | 23 | 14% | 40 | 21% | 26 | 13% | 133 | 15% |
| Not Injured | 62 | 36% | 74 | 44% | 66 | 39% | 80 | 41% | 88 | 44% | 370 | 41% |
| Total | 170 | 100% | 168 | 100% | 170 | 100% | 193 | 100% | 202 | 100% | 903 | 100% |

Note, figures are provisional and subject to change. Drivers involved in fatal collisions may have been fatally injured, seriously injured, minorly injured or not injured.



Age profile of all drivers involved in fatal collisions (n=903 drivers)



2019-2023

- There were 903 drivers involved in fatal collisions between 2019-2023 (an average of 181 drivers involved annually)
- Of those involved 19% were 46-55, 19% were 36-45 and 17% were 26-35 years.
- Of those involved 78% were male and 22% were female.

| Age group of driver involved | Killed driver | | Seriously injured driver | | Minors injured driver | | Not injured driver | | Total | |
|------------------------------|---------------|-------------|--------------------------|-------------|-----------------------|-------------|--------------------|-------------|------------|-------------|
| | n | % | n | % | n | % | n | % | n | % |
| 0-15 | 4 | 1% | 0 | 0% | 2 | 2% | 0 | 0% | 6 | 1% |
| 16-25 | 54 | 17% | 14 | 18% | 25 | 19% | 54 | 15% | 147 | 16% |
| 26-35 | 63 | 19% | 16 | 21% | 17 | 13% | 59 | 16% | 155 | 17% |
| 36-45 | 51 | 16% | 11 | 14% | 28 | 21% | 79 | 21% | 169 | 19% |
| 46-55 | 39 | 12% | 17 | 22% | 25 | 19% | 94 | 25% | 175 | 19% |
| 56-65 | 27 | 8% | 11 | 14% | 18 | 14% | 45 | 12% | 101 | 11% |
| 66-74 | 40 | 12% | 6 | 8% | 11 | 8% | 25 | 7% | 82 | 9% |
| 75+ | 46 | 14% | 1 | 1% | 7 | 5% | 12 | 3% | 66 | 7% |
| Unknown | 0 | 0% | 0 | 0% | 0 | 0% | 2 | 1% | 2 | <1% |
| Total | 324 | 100% | 76 | 100% | 133 | 100% | 370 | 100% | 903 | 100% |

Note, figures are provisional and subject to change. Drivers involved in fatal collisions may have been fatally injured, seriously injured, minorly injured or not injured.



All drivers involved in fatal collisions by licence type (n=903 drivers)



2019-2023

Of those 903 drivers involved in fatal collisions:

- 78% had a full licence
- 7% had a foreign licence
- 4% were a learner permit holder
- 6% had no licence

| Licence type of driver involved | Total | % Total |
|---------------------------------|------------|-------------|
| Full licence | 704 | 78% |
| Foreign licence | 63 | 7% |
| Learner permit holder | 38 | 4% |
| No licence | 50 | 6% |
| Disqualified | 13 | 1% |
| At present unknown* | 35 | 4% |
| Total | 903 | 100% |

31 (3%) unaccompanied
7 (1%) accompanied

*'At present unknown' includes "Under Investigation", "Documents Demanded" and "After Investigation – Unknown"

Note, figures are provisional and subject to change. Drivers involved in fatal collisions may have been fatally injured, seriously injured, minorly injured or not injured. While some values in the table above are not actual licence categories, please note, the data is recorded in this way in the collision database.

Drivers with learner permits involved in fatal collisions

2019-2023

Profile of drivers with learner permits involved in fatal collisions (n=38)

2019-2023

- Not all drivers with learner permits involved in fatal collisions were fatally injured.
- Of those 38 drivers with learner permits involved, 37% (14) were fatally injured, 24% (9) seriously injured, and 37% (14) minorly injured.
- 24 other road users were killed in collisions where a driver with a learner permit was driving.
- 31 of the 38 drivers with a learner permit were unaccompanied and 7 were accompanied at the time of the collision.
- 34 were driving a car, 2 were driving a van and 2 were driving an agricultural vehicle.

| Injury of the driver with learner permits | Total | % Total |
|---|-----------|-------------|
| Fatal | 14 | 37% |
| Serious | 9 | 24% |
| Minor | 14 | 37% |
| Not Injured | 1 | 3% |
| Total | 38 | 100% |

Note, figures are provisional and subject to change. Learner drivers involved in fatal collisions may have been fatally injured, seriously injured, minorly injured or not injured. Please note, the fact that a learner driver was involved in a collision does not infer that the learner driver was at fault in contributing to the collision. The collision data does not contain information on culpability.

Age profile of drivers with learner permits involved in fatal collisions (n=38)



2019-2023

- Between 2019 and 2023, there were 38 drivers with a learner permit involved in fatal Collisions, of which 15 were involved in collisions in 2023 alone.
- Of those drivers with learner permits involved, 24 were aged 16-25 years, 11 were aged 26-35 years and 3 were aged 36+ years.
- 29 were male and 9 were female.

| Age group of driver with learner permits | Number of learner drivers | % Total |
|--|---------------------------|-------------|
| 16-25 | 24 | 63% |
| 26-35 | 11 | 29% |
| 36+ | 3 | 8% |
| Total | 38 | 100% |

Note, figures are provisional and subject to change. Learner drivers involved in fatal collisions may have been fatally injured, seriously injured, minorly injured or not injured.



All drivers involved in serious injury collisions

2019-2023

Injury status of all drivers involved in serious injury collisions (n=7,362 drivers)



2019-2023

- There were 7,362 drivers involved in serious injury collisions between 2019-2023.
- Not all drivers involved in serious injury collisions were seriously injured.
- Of those 7,362 drivers involved, 31% (2,277) were seriously injured, 12% (859) minorly injured and 57% (4,214) were not injured.

| Injury of driver involved | 2019 | | 2020 | | 2021 | | 2022 | | 2023 | | Total | |
|---------------------------|-------------|-------------|-------------|-------------|-------------|-------------|-------------|-------------|-------------|-------------|-------------|-------------|
| | n | % | n | % | n | % | n | % | n | % | n | % |
| Serious | 452 | 29% | 372 | 31% | 450 | 33% | 539 | 31% | 464 | 31% | 2277 | 31% |
| Minor | 200 | 13% | 133 | 11% | 140 | 10% | 214 | 12% | 172 | 12% | 859 | 12% |
| Not Injured | 915 | 58% | 706 | 58% | 782 | 57% | 969 | 56% | 842 | 57% | 4214 | 57% |
| Unknown | 9 | 1% | 1 | 0% | 1 | 0% | 1 | 0% | 0 | 0% | 12 | <1% |
| Total | 1576 | 100% | 1212 | 100% | 1373 | 100% | 1723 | 100% | 1478 | 100% | 7362 | 100% |

Note, figures are provisional and subject to change. Drivers involved in serious injury collisions may have been seriously injured, minorly injured or not injured.



Age profile of all drivers involved in serious injury collisions (n=7,362 drivers)



2019-2023

- There were 7,362 drivers involved in serious injury collisions between 2019-2023 (an average of 1,473 drivers involved annually)
- Of those involved, 20% were aged 36-45, 19% were aged 26-35, 18% were aged 16-25 and 18% were aged 46-55
- Of those involved 67% were male, 32% were female, and for the remaining 1% gender is unknown.

| Age group of driver involved | Seriously injured | | Minorsly injured driver | | Not injured driver | | Unknown injury to driver | | Total | |
|------------------------------|-------------------|-------------|-------------------------|-------------|--------------------|-------------|--------------------------|-------------|-------------|-------------|
| | n | % | n | % | n | % | n | % | n | % |
| 0-15 | 7 | 0% | 1 | 0% | 2 | 0% | 0 | 0% | 10 | <1% |
| 16-25 | 445 | 20% | 195 | 23% | 677 | 16% | 0 | 0% | 1317 | 18% |
| 26-35 | 412 | 18% | 166 | 19% | 791 | 19% | 0 | 0% | 1369 | 19% |
| 36-45 | 402 | 18% | 194 | 23% | 890 | 21% | 0 | 0% | 1486 | 20% |
| 46-55 | 353 | 16% | 135 | 16% | 806 | 19% | 0 | 0% | 1294 | 18% |
| 56-65 | 273 | 12% | 73 | 8% | 517 | 12% | 0 | 0% | 863 | 12% |
| 66-74 | 196 | 9% | 49 | 6% | 291 | 7% | 0 | 0% | 536 | 7% |
| 75+ | 188 | 8% | 46 | 5% | 210 | 5% | 0 | 0% | 444 | 6% |
| Unknown | 1 | 0% | 0 | 0% | 30 | 1% | 12 | 100% | 43 | 1% |
| Total | 2277 | 100% | 859 | 100% | 4214 | 100% | 12 | 100% | 7362 | 100% |

Note, figures are provisional and subject to change. Drivers involved in serious injury collisions may have been seriously injured, minorly injured or not injured.



All drivers involved in serious injury collisions by licence type (n=7,362 drivers)



2019-2023

Of those 7,362 drivers involved in fatal collisions:

- 83% had a full licence
- 6% had a foreign licence
- 5% were a learner permit holder
- 3% had no licence

| Licence Type of driver involved | Total | % Total |
|---------------------------------|-------------|-------------|
| Full licence | 6110 | 83% |
| Foreign licence | 440 | 6% |
| Learner permit holder | 352 | 5% |
| No licence | 241 | 3% |
| Disqualified | 41 | <1% |
| Novice licence | 15 | <1% |
| Exempt driver | 14 | <1% |
| At present unknown* | 149 | 2% |
| Total | 7362 | 100% |

260 (4%) unaccompanied
92 (1%) accompanied

*'At present unknown' includes "Under Investigation", "Documents Demanded" and "After Investigation – Unknown"

Note, figures are provisional and subject to change. Drivers involved in serious injury collisions may have been seriously injured, minorly injured or not injured. While some values in the table above are not actual licence categories, please note, the data is recorded in this way in the collision database.



Drivers with learner permits involved in serious injury collisions

2019-2023

Profile of drivers with learner permits involved in serious injury collisions (n=352)

VISION
ZERO

RSA

2019-2023

- Not all drivers with learner permits involved in serious injury collisions were seriously injured.
- Of those 352 drivers with learner permits involved, 33% (116) were seriously injured, 15% (54) minorly injured and 52% (182) were not injured.
- 312 other road users were seriously injured in serious injury collisions where a driver with a learner permit was driving.
- 260 of the 352 drivers with a learner permit were unaccompanied and 92 were accompanied at the time of the collision.
- 332 were driving a car, 8 were driving an agricultural vehicle/tractor, 7 were driving a LGV, 2 were driving a HGV, and 3 driving other vehicle types.

| Injury of the drivers with learner permits | Total | % Total |
|--|------------|-------------|
| Serious | 116 | 33% |
| Minor | 54 | 15% |
| Not Injured | 182 | 52% |
| Total | 352 | 100% |

Note, figures are provisional and subject to change. Learner drivers involved in serious injury collisions may have been seriously injured, minorly injured or not injured.

Age profile of drivers with learner permits involved in serious injury collisions (n=352)



2019-2023

- Between 2019 and 2023, there were 352 drivers with a learner permit involved in serious injury collisions.
- Of those drivers with learner permits involved, 60% were aged 16-25 years and 20% were aged 26-35 years.
- Of those drivers with learner permits involved, 66% were male and 34% were female.

| Age group of drivers with learner permits | Number of learner drivers | % Total |
|---|---------------------------|-------------|
| 16-25 | 212 | 60% |
| 26-35 | 72 | 20% |
| 36-45 | 42 | 12% |
| 46-55 | 15 | 4% |
| 56-65 | 8 | 2% |
| 66+ | 3 | 1% |
| Total | 352 | 100% |

Note, figures are provisional and subject to change. Learner drivers involved in serious injury collisions may have been seriously injured, minorly injured or not injured.





RSA

Driver spotlight report: fatalities and serious injuries

2019-2023



VISION
ZERO