



Child Casualties Report 1997-2009

Published by:
ROAD SAFETY AUTHORITY
Primrose Hill, Dublin Road
Ballina
Co. Mayo, IRELAND
Locall: 1890506080
Website: www.rsa.ie

Child (0-14 Years Old) Road Casualties 1997 – 2009

Overview

Over the ten year period, 1997-2009, 246 children (0-14 years old) have been killed on our roads. An additional 1,013 children were seriously injured. The provisional figures for 2010 road deaths indicated that numbers of children killed on the Irish roads decreased from 12 in 2009 to 7 in 2010.

Forty three per cent of child casualties killed in the period 1997 to 2009 were pedestrians. Of all child casualties who were seriously injured in the period 1997 to 2009, 44 per cent were car passengers. Fifty –eight per cent of children killed were male. Peak time for children to be killed on the road is during the hours of 4:00 p.m. – 6:59 p.m. Children are more likely to be killed during the summer months (May to August).

Thirty per cent of children killed over the period 1997-2009 as car passengers or passengers of other vehicles were neither wearing seatbelt nor child restraint.

The child fatality rate per million populations is now 13, less than half of the rate in 1997 (32).

Other Key Facts: Since 1997 there has been

- 45.6% reduction in the number of children 14 years of age or young killed on our roads compared to 2009.
- 29% reduction in the number of children 14 years of age or young injured on our roads compared to 2009.

Broken down by road user category there has been;

- 36% decrease in pedestrian fatalities
- 60% decrease in cyclist fatalities
- 73% decrease in car passenger fatalities

CASUALTIES

Of all child casualties who were seriously injured in the period 1997 to 2009, 44 per cent were car passengers. Fifty eight per cent of children killed were male. Thirty per cent of children killed over the period 1997-2009 as car passengers or passengers of other vehicles were neither wearing seatbelt nor child restraint.

Table 1: CHILD (0-14 YEARS OLD) ROAD FATALITIES BY AGE & GENDER

	1997	1998	1999	2000	2001	2002	2003	2004	2005	2006	2007	2008	2009	Total	%
Male 0-4	4	5	3	3	6	3	4	1	3	5	2	3	5	47	19.1
Female 0-4	2	3	4	3	3	4	3	1	0	3	5	1	2	34	13.8
Male 5-9	4	6	5	4	4	3	3	1	1	3	0	3	1	38	15.4
Female 5-9	5	4	3	4	2	1	2	1	0	2	2	2	0	28	11.4
Male 10-14	7	12	6	3	5	3	2	1	4	1	5	6	2	57	23.2
Female 10-14	5	3	2	5	6	4	2	2	1	2	2	4	2	40	16.3
Gender Unknown	0	1	0	0	0	0	0	0	0	0	0	1	0	2	0.8
Total	27	34	23	22	26	18	16	7	9	16	16	20	12	246	100

Table 2: CHILD (0-14 YEARS OLD) ROAD FATALITIES & SERIOUS INJURIES BY AGE & GENDER

	1997	1998	1999	2000	2001	2002	2003	2004	2005	2006	2007	2008	2009	Total	%
Male 0-4	17	18	12	14	20	20	9	7	9	12	8	11	13	170	13.5
Female 0-4	15	13	14	9	7	6	6	2	9	10	10	7	5	113	9.0
Male 5-9	25	34	27	17	27	12	17	8	12	15	13	17	7	231	18.3
Female 5-9	21	26	17	15	11	10	8	11	12	9	10	6	3	159	12.6
Male 10-14	53	36	35	24	29	14	17	17	24	13	24	19	16	321	25.5
Female 10-14	27	27	27	28	24	14	14	17	9	8	15	11	8	229	18.2
Gender Unknown	4	5	5	4	1	4	3	1	3	3	2	1	0	36	2.9
Total	162	159	137	111	119	80	74	63	78	70	82	72	52	1259	100

Figure 1

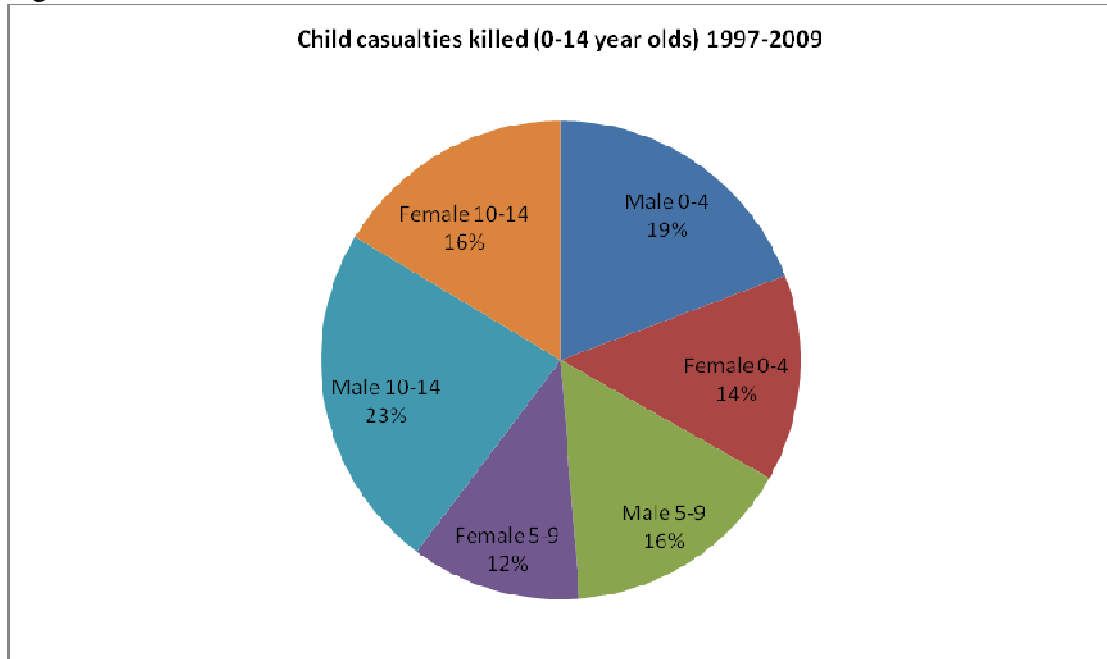


Figure 2: CHILD (0-14 YEARS OLD) ROAD FATALITIES. 1997-2010

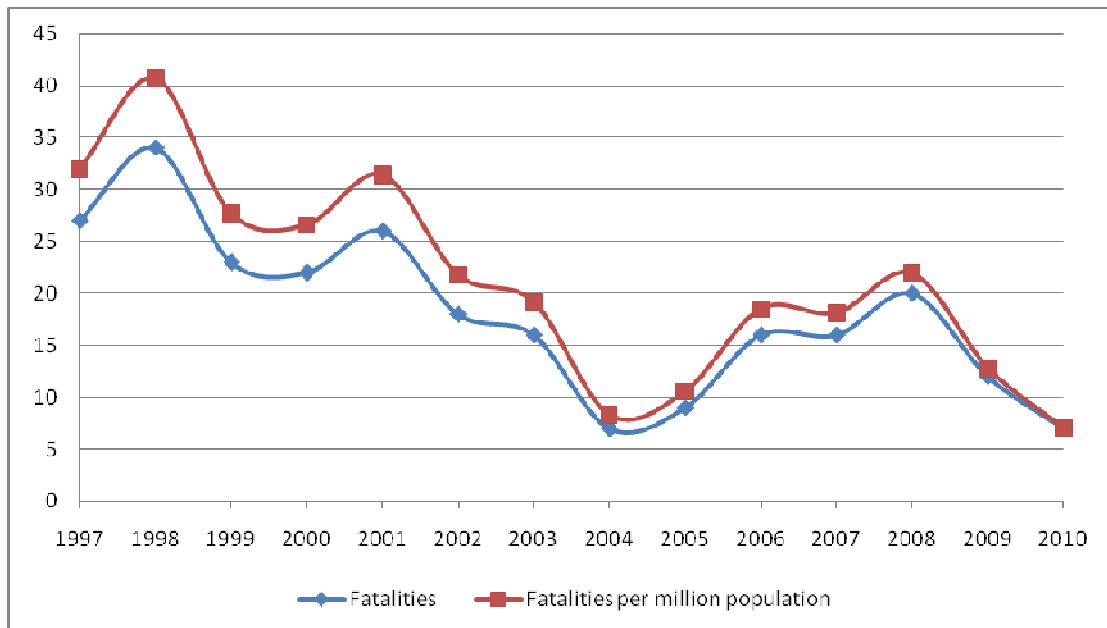


Table 3: Child (0-14 years old) Road Users Killed & Seriously Injured, 1997 – 2009

Road User	Killed	Seriously Injured	Total
	Male		
Pedestrians	69	236	305
Pedal-cyclists	20	93	113
Car Passengers	43	225	268
Other road users	10	29	39
Total	142	583	725
	Female		
Pedestrians	35	152	187
Pedal-cyclists	12	19	31
Car Passengers	48	202	250
Other road users	6	26	32
Total	101	399	500

CHILD (0-14 YEARS OLD) ROAD FATALITIES BY GENDER, 1997-2009

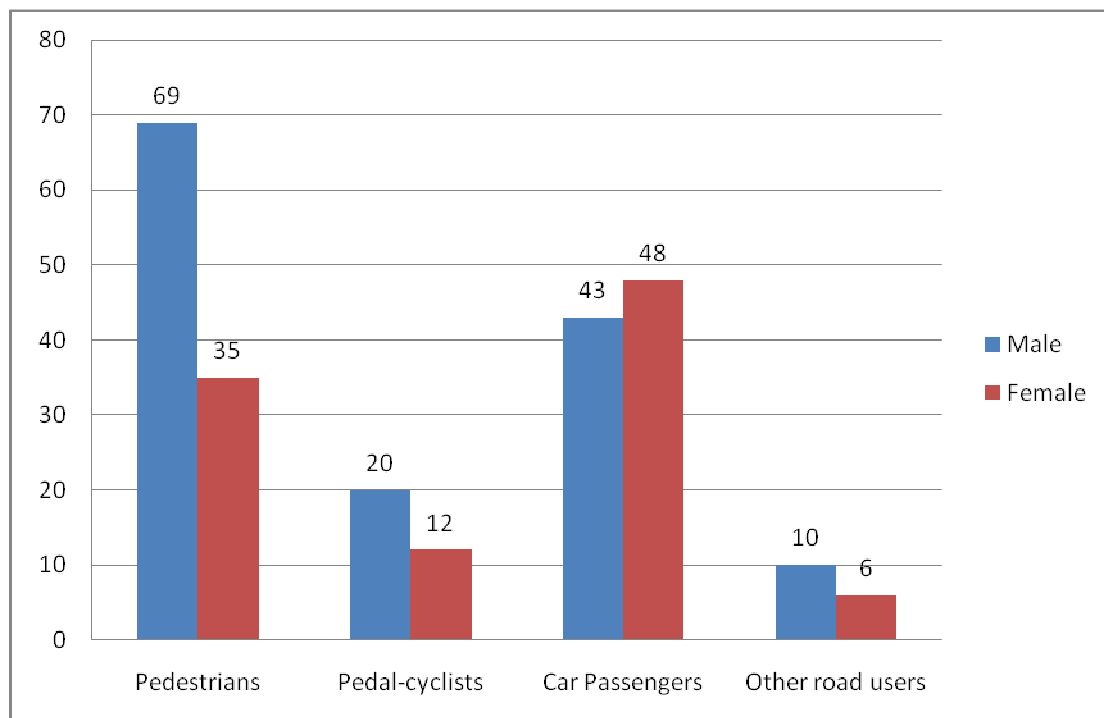


Table 4: CHILD (0-14 YEARS OLD) ROAD USERS KILLED NOT WEARING SEATBELT OR CHILD RESTRAINT BY AGE & GENDER

	1997	1998	1999	2000	2001	2002	2003	2004	2005	2006	2007	2008	2009	Total	%
Male 0-4	1	1	1	1	1	0	0	0	0	0	0	2	0	7	21.9
Female 0-4	0	0	0	0	0	0	0	0	0	0	0	0	0	0	0.0
Male 5-9	2	1	1	1	0	0	0	0	0	0	0	0	0	5	15.6
Female 5-9	2	1	1	2	0	0	0	0	0	1	0	0	0	7	21.9
Male 10-14	2	3	0	0	1	1	0	0	0	0	0	0	0	7	21.9
Female 10-14	3	0	0	1	1	0	1	0	0	0	0	0	0	6	18.8
Gender Unknown	0	0	0	0	0	0	0	0	0	0	0	0	0	0	0.0
Total	10	6	3	5	3	1	1	0	0	1	0	2	0	32	100.0

Table 5: CHILD (0-14 YEARS OLD) ROAD USERS KILLED AND SERIOUSLY INJURED NOT WEARING SEATBELT OR CHILD RESTRAINT BY AGE & GENDER

	1997	1998	1999	2000	2001	2002	2003	2004	2005	2006	2007	2008	2009	Total	%
Male 0-4	6	2	2	1	3	1	0	0	0	0	0	2	1	18	11.7
Female 0-4	4	3	0	0	1	0	0	0	0	0	1	0	0	9	5.8
Male 5-9	7	6	4	4	4	0	0	0	0	0	0	0	1	26	16.9
Female 5-9	5	3	2	3	1	1	0	0	0	1	0	0	0	16	10.4
Male 10-14	21	9	5	3	4	2	1	0	1	1	2	0	4	53	34.4
Female 10-14	7	2	4	6	4	0	2	1	0	1	1	2	0	30	19.5
Gender Unknown	1	0	0	0	0	0	0	0	0	0	1	0	0	2	1.3
Total	51	25	17	17	17	4	3	1	1	3	5	4	6	154	100.0

Table 4: Child (0-14 years old) Road Users Killed 1997 – 2009

YEAR	PEDESTRIANS	PEDAL-CYCLISTS	CAR PASSENGERS	TOTAL
2009	7	2	3	12
2008	8	1	9	18
2007	4	3	9	16
2006	6	0	9	15
2005	8	0	1	9
2004	2	0	4	6
2003	7	3	6	16
2002	8	3	5	16
2001	11	2	11	24
2000	8	3	9	20
1999	10	3	6	19
1998	15	8	9	32
1997	11	5	11	27
Total	105	33	92	230

Note: Other road users are not included

- Pedestrian Fatalities = 43%
- Pedal Cyclist Fatalities = 13%
- Car Passenger Fatalities = 37%
- Other road users Fatalities = 7%

Figure 3

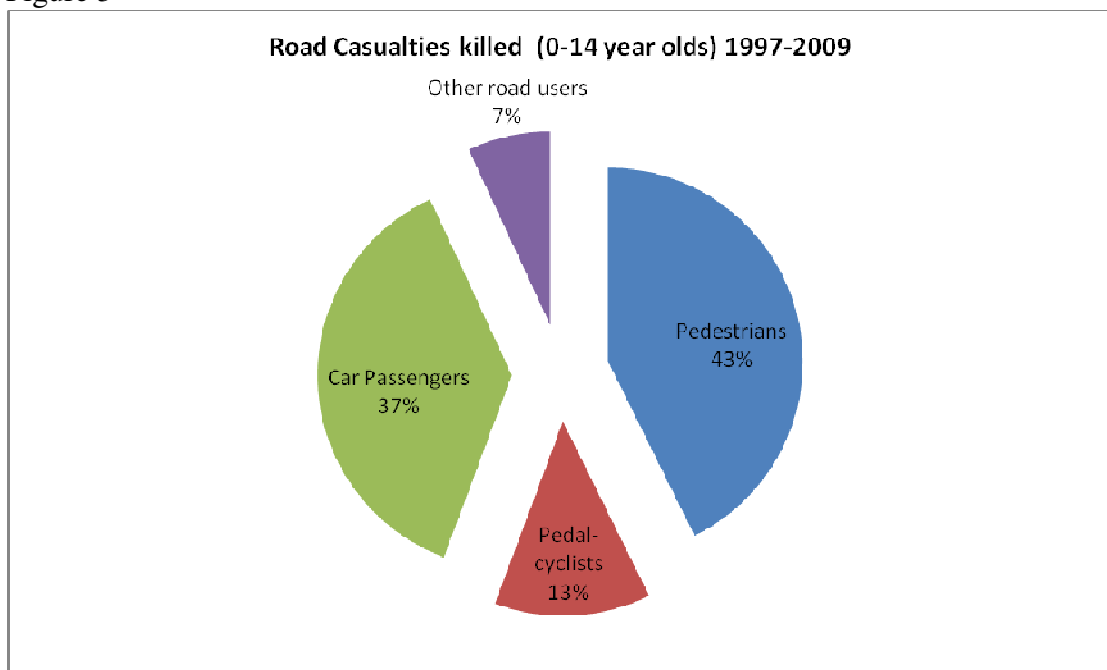


Table 5: Child (0-14 years old) Road Users Killed and Seriously Injured 1997 – 2009

Year	Pedestrians	Pedal-cyclists	Car Passengers	Other Road users	Total
2009	23	7	21	1	52
2008	35	4	31	2	72
2007	27	10	40	5	82
2006	27	3	34	6	70
2005	35	3	35	5	78
2004	22	10	28	3	63
2003	35	8	25	6	74
2002	45	7	26	2	80
2001	43	10	56	10	119
2000	40	16	50	5	111
1999	37	16	73	11	137
1998	74	19	53	13	159
1997	58	32	67	5	162
Total	501	145	539	74	1259

- Pedestrian KSI = 40%
- Pedal Cyclist KSI = 11%
- Car Passenger KSI = 43 %
- Other road user KSI= 6%

Figure 4

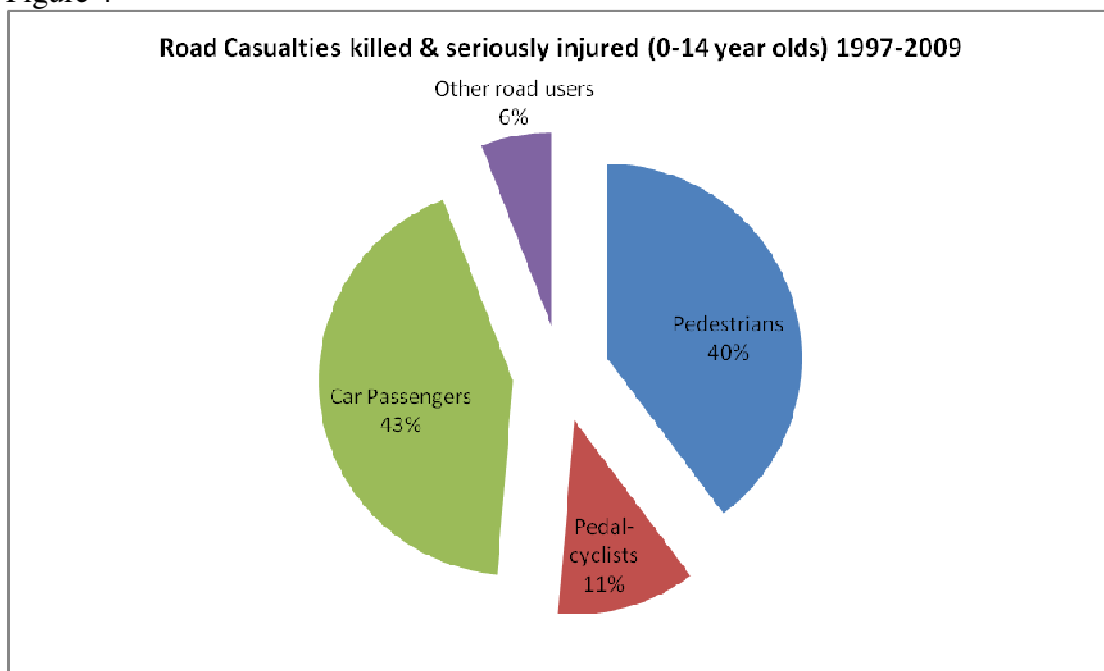


Figure 5

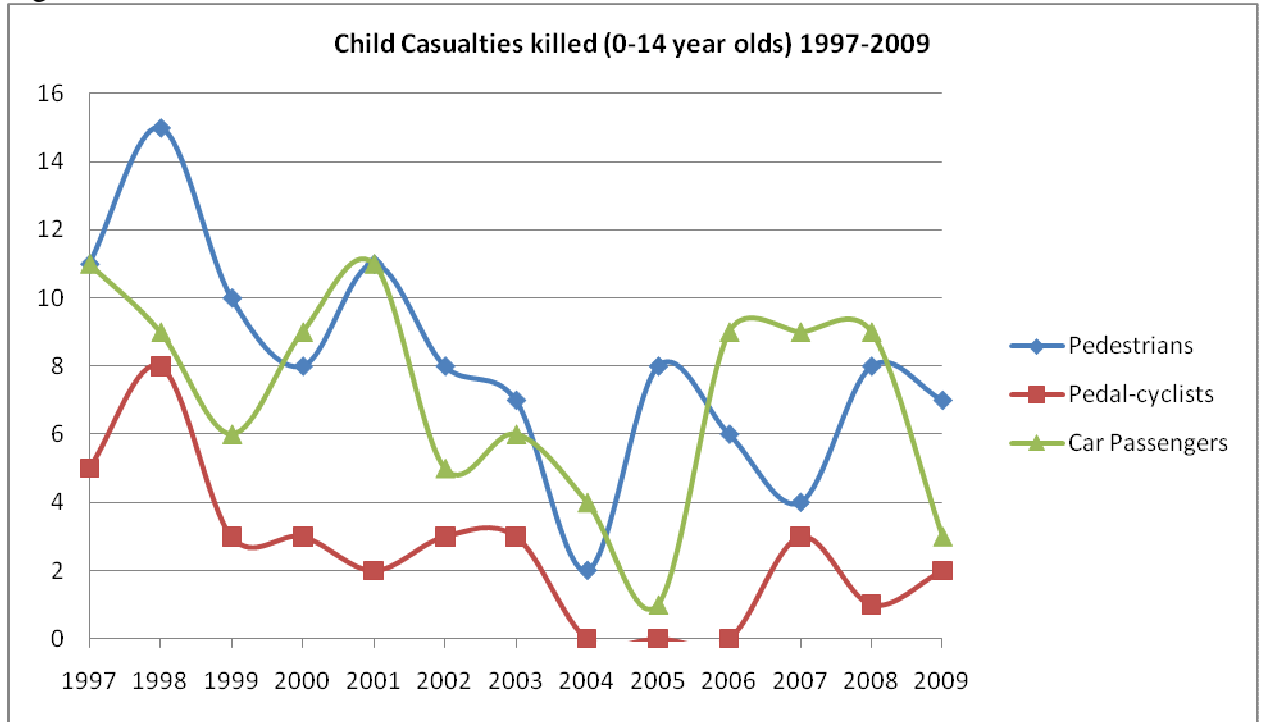
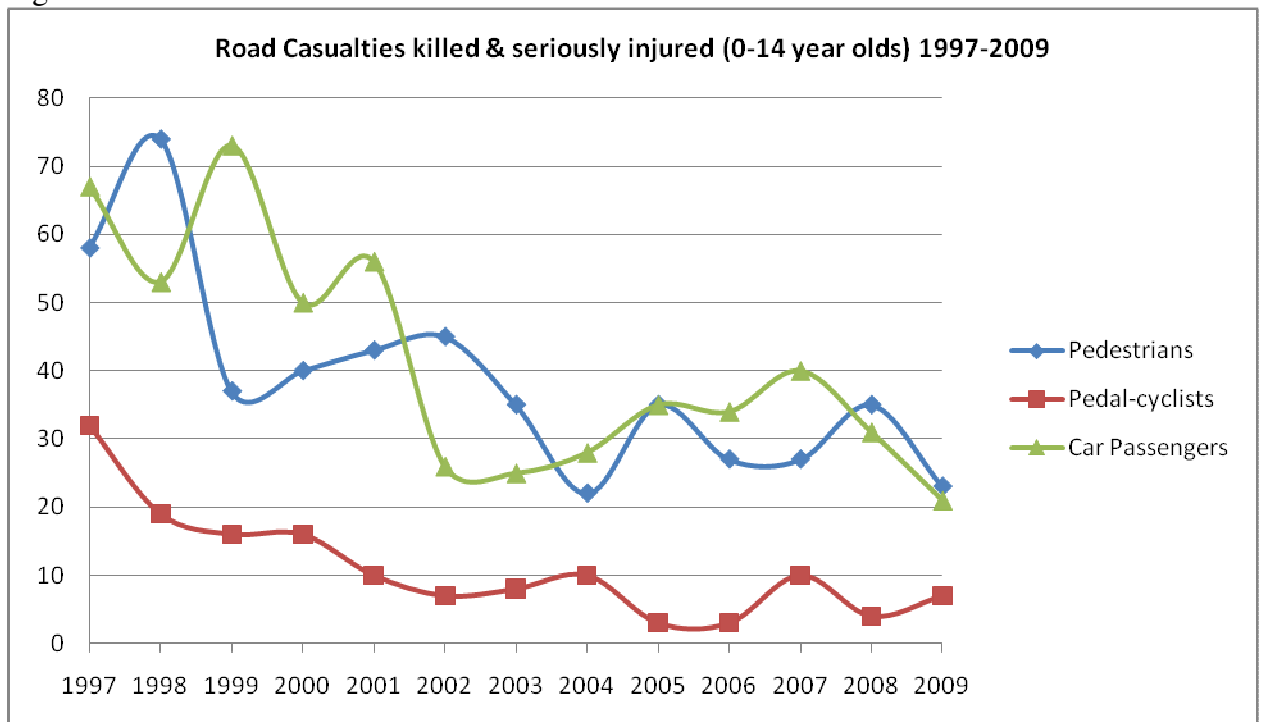


Figure 6



WHEN CHILDREN (0-14 YEARS OLD) ARE KILLED

In the period 1997-2009, there were 246 child fatalities, of which 83 (34%) occurred during the hours of 4:00 p.m. – 6:59 p.m. Eighteen per cent of children were killed on Friday. Forty -three per cent were killed during the months of May through August.

Table 6: Children (0-14 years old) Killed By Hour of the Day, 1997-2009

Hour	1997	1998	1999	2000	2001	2002	2003	2004	2005	2006	2007	2008	2009	Total	%
Midnight	0	0	2	1	0	0	0	0	0	0	0	0	0	3	1.2
1	0	0	0	0	0	0	0	0	0	0	0	0	0	0	0.0
2	0	0	0	0	0	0	0	0	0	0	0	0	0	0	0.0
3	1	0	0	0	0	0	0	0	0	0	0	0	0	1	0.4
4	0	0	0	0	0	0	0	0	0	0	0	0	0	0	0.0
5	0	0	0	0	0	0	0	1	0	0	0	0	0	1	0.4
6	0	0	0	0	0	0	0	0	0	0	0	0	0	0	0.0
7	0	0	0	0	0	1	0	0	0	0	1	0	1	3	1.2
8	0	2	0	1	1	0	0	1	1	1	0	4	0	11	4.5
9	0	0	0	0	0	0	0	0	0	0	1	0	0	1	0.4
10	3	1	0	2	0	0	2	0	0	0	0	0	0	8	3.3
11	2	0	1	3	1	1	0	0	0	0	0	2	1	11	4.5
12	0	3	1	3	1	0	3	0	0	0	0	2	1	14	5.7
13	1	0	3	0	5	0	1	0	1	2	0	3	1	17	6.9
14	1	2	2	2	4	2	0	1	0	4	5	3	0	26	10.6
15	2	5	0	2	4	2	1	0	1	0	0	0	1	18	7.3
16	5	4	3	3	5	4	2	0	3	2	2	0	1	34	13.8
17	5	2	3	1	2	1	3	2	1	1	5	1	4	31	12.6
18	4	4	4	0	0	2	0	0	0	2	0	1	1	18	7.3
19	1	4	2	0	0	2	2	1	1	1	0	1	0	15	6.1
20	1	5	2	3	2	2	1	0	0	1	0	1	0	18	7.3
21	0	2	0	1	1	1	1	0	0	2	2	1	0	11	4.5
22	1	0	0	0	0	0	0	1	1	0	0	0	0	3	1.2
23	0	0	0	0	0	0	0	0	0	0	0	1	1	2	0.8
Unknown	0	0	0	0	0	0	0	0	0	0	0			0	0.0
Total	27	34	23	22	26	18	16	7	9	16	16	20	12	246	100

Table 7: Children (0-14 years old) killed & seriously injured by hour of the day, 1997-2009

	1997	1998	1999	2000	2001	2002	2003	2004	2005	2006	2007	2008	2009	Total	%
Midnight	0	0	2	1	0	2	2	4	3	1	1	0	0	16	1.3
1	1	1	0	0	0	0	0	1	0	0	1	1	0	5	0.4
2	0	0	0	2	3	0	0	0	1	1	4	0	0	11	0.9
3	2	0	0	0	0	0	0	0	0	0	0	0	1	3	0.2
4	0	0	0	0	0	1	0	1	0	0	0	0	0	2	0.2
5	1	1	0	1	0	0	0	2	0	0	0	0	0	5	0.4
6	0	0	0	0	0	2	2	0	0	0	0	0	0	4	0.3
7	0	0	2	0	0	1	0	2	0	0	1	0	1	7	0.6
8	2	9	3	3	2	1	3	2	3	2	0	6	2	38	3.0
9	1	1	7	4	5	1	2	1	0	2	4	1	0	29	2.3
10	6	4	4	2	3	0	3	0	0	2	0	0	2	26	2.1
11	11	2	5	6	9	4	0	0	4	3	3	4	1	52	4.1
12	13	8	8	9	4	3	7	2	3	1	2	6	8	74	5.9
13	7	4	7	8	7	5	6	3	10	6	5	3	1	72	5.7
14	9	13	17	9	11	3	1	6	4	13	9	9	3	107	8.5
15	10	13	8	12	13	7	6	8	8	6	7	6	6	110	8.7
16	27	20	14	12	12	13	8	3	10	8	6	5	5	143	11.4
17	19	18	12	10	13	11	11	4	7	6	18	10	7	146	11.6
18	20	22	14	9	17	7	9	9	9	8	4	7	6	141	11.2
19	13	14	13	5	2	10	3	3	6	3	5	2	2	81	6.4
20	9	21	7	14	12	5	6	6	3	4	4	5	6	102	8.1
21	5	3	3	2	3	3	4	0	2	3	3	4	0	35	2.8
22	4	3	8	1	0	1	0	2	4	0	5	0	0	28	2.2
23	1	2	3	1	3	0	1	1	1	1	0	3	1	18	1.4
Unknown	1	0	0	0	0	0	0	3	0	0	0	0	0	4	0.3
Total	162	159	137	111	119	80	74	63	78	70	82	72	52	1259	100

Table 8: Children (0-14 years old) killed by day of the week, 1997-2009

Day of the week	1997	1998	1999	2000	2001	2002	2003	2004	2005	2006	2007	2008	2009		%
Sunday	5	3	0	1	0	5	2	1	4	4	1	2	2	30	12.2
Monday	3	6	4	4	4	2	1	0	0	3	3	3	2	35	14.2
Tuesday	1	9	3	2	8	1	0	3	0	2	3	3	2	37	15.0
Wednesday	7	1	3	1	3	5	3	1	2	3	3	3	2	37	15.0
Thursday	4	5	3	3	4	3	3	0	0	0	4	1	1	31	12.6
Friday	3	7	6	5	5	2	4	1	2	1	1	4	2	43	17.5
Saturday	4	3	4	6	2	0	3	1	1	3	1	4	1	33	13.4
Total	27	34	23	22	26	18	16	7	9	16	16	20	12	246	100

Table 9: Children (0-14 years old) killed & seriously injured by day of the week, 1997-2009

Day of the week	1997	1998	1999	2000	2001	2002	2003	2004	2005	2006	2007	2008	2009	Total	%
Sunday	28	25	13	10	10	14	9	13	17	12	8	10	6	175	13.9
Monday	20	21	21	22	20	4	7	5	5	10	19	6	5	165	13.1
Tuesday	17	20	22	13	21	15	5	12	4	9	9	13	6	166	13.2
Wednesday	22	22	18	15	12	12	18	7	13	10	9	11	6	175	13.9
Thursday	19	19	18	10	17	9	8	9	11	9	11	7	8	155	12.3
Friday	26	29	19	20	19	15	10	7	12	7	15	13	7	199	15.8
Saturday	30	23	26	21	20	11	17	10	16	13	11	12	14	224	17.8
Total	162	159	137	111	119	80	74	63	78	70	82	72	52	1259	100

Table 10: Children (0-14 years old) killed by month of the year, 1997-2009

Month	1997	1998	1999	2000	2001	2002	2003	2004	2005	2006	2007	2008	2009	Total	%
January	0	2	3	1	1	2	0	1	0	1	0	2	2	12	4.9
February	3	2	2	2	2	3	0	1	1	1	0	4	0	22	8.9
March	3	1	4	1	2	1	2	1	1	1	1	4	1	21	8.5
April	1	5	3	4	2	1	1	1	1	1	1	2	0	24	9.8
May	3	4	1	2	3	1	3	0	1	0	5	0	2	27	11.0
June	4	2	3	2	1	3	1	2	2	1	0	2	3	24	9.8
July	0	7	2	1	5	0	2	0	0	5	1	2	1	27	11.0
August	5	1	0	4	3	2	4	1	0	0	2	2	1	27	11.0
September	2	5	3	1	4	1	0	0	0	1	2	1	0	17	6.9
October	2	1	1	2	2	2	3	0	0	4	0	0	1	20	8.1
November	4	1	1	1	1	2	0	0	2	1	4	0	0	17	6.9
December	0	3	0	1	0	0	0	0	1	0	0	1	1	8	3.3
Total	27	34	23	22	26	18	16	7	9	16	16	20	12	246	100.0

Table 11: Children (0-14 years old) killed & seriously injured by month of the year, 1997-2009

Month	1997	1998	1999	2000	2001	2002	2003	2004	2005	2006	2007	2008	2009	Total	%
January	6	7	15	7	19	7	7	4	5	6	4	2	7	96	7.6
February	15	15	9	16	4	10	3	7	5	2	4	11	4	105	8.3
March	14	7	13	10	5	10	6	6	6	4	4	11	4	100	7.9
April	12	24	13	10	9	11	3	7	7	6	10	4	3	119	9.5
May	15	16	11	6	10	4	7	6	4	3	8	5	8	103	8.2
June	15	13	10	8	9	14	6	12	7	8	4	7	6	119	9.5
July	18	19	15	5	16	3	7	4	8	10	6	7	6	124	9.8
August	23	11	18	17	13	9	7	7	13	6	12	8	5	149	11.8
September	8	10	6	8	13	3	6	3	7	6	8	5	3	86	6.8
October	22	10	11	7	11	5	12	4	3	10	8	3	3	109	8.7
November	10	13	4	9	6	2	8	2	8	6	12	5	2	87	6.9
December	4	14	12	8	4	2	2	1	5	3	2	4	1	62	4.9
Total	162	159	137	111	119	80	74	63	78	70	82	72	52	1259	100

WHERE MORE CHILDREN WERE KILLED

In the period 1997-2009, 61 per cent of child fatalities occurred outside a built up area (i.e. on roads with posted speed limit more than 60km/h). Fifty seven per cent of all children (0-14 years old) injured were inside built up areas. Twenty-six per cent of all child (0-14 years old) fatalities occurred in county Dublin and Cork.

Broken down by percentages of the five counties having the highest number of child fatalities in the last ten years are:

- Dublin with 15 per cent of the total number of children killed in the last ten years
- Cork with 11 per cent of the total number of children killed in the last ten years

Table 12: Child (0-14 years old) Road Users Killed & Injured in Inside and Outside Built up Areas in 1997-2009

Areas	Severity	Year													Total
		1997	1998	1999	2000	2001	2002	2003	2004	2005	2006	2007	2008	2009	
Inside Built-up Area	Killed	12	16	9	9	8	8	5	2	3	6	7	6	6	97
	Seriously Injured	69	70	39	41	44	39	29	28	32	24	30	31	25	501
	Minor Injury	627	509	511	436	376	359	338	306	284	312	319	428	438	5243
Outside Built-up Area	Killed	15	18	14	13	18	10	11	5	6	10	9	14	6	149
	Seriously Injured	66	55	75	48	49	23	29	28	37	30	36	21	15	512
	Minor Injury	420	413	401	387	283	194	206	174	247	207	257	338	365	3892

Note: Collision omitted when speed limit is unknown

Figure 7

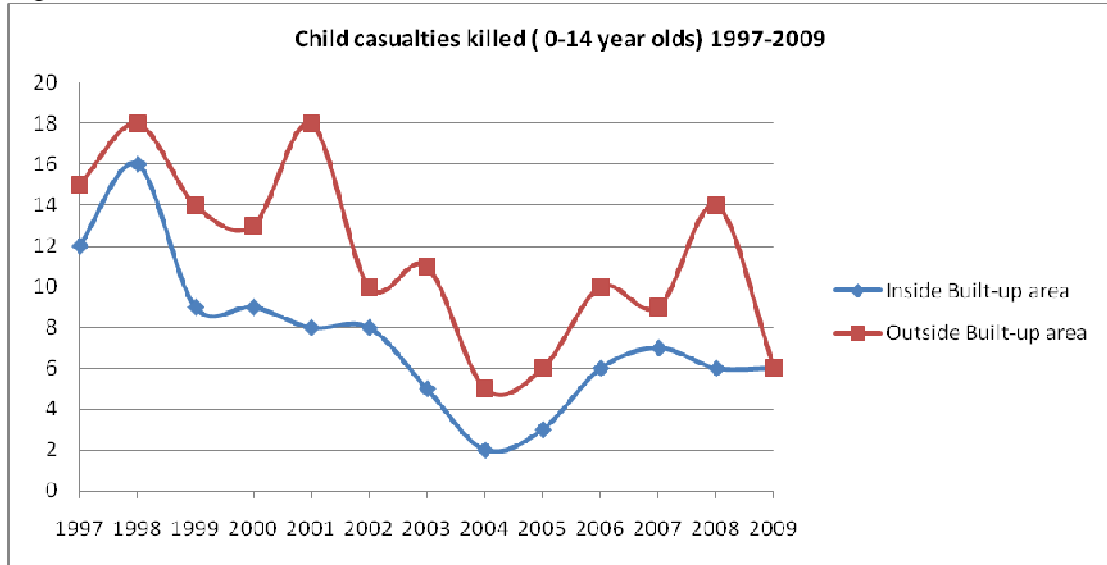


Figure 8

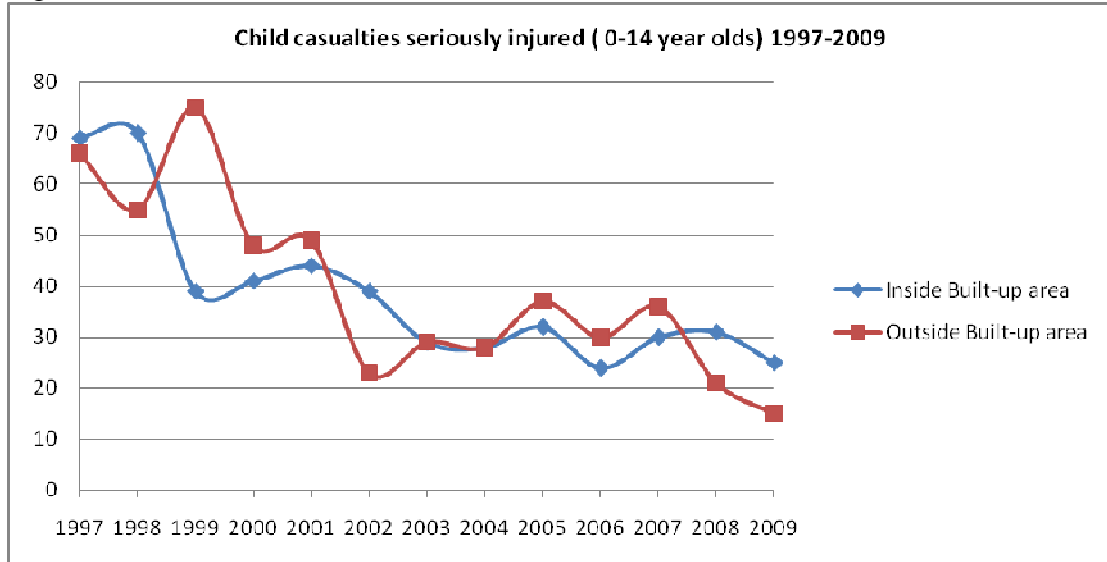


Table 13: Children (0-14 years old) killed by county, 1997-2009

County	1997	1998	1999	2000	2001	2002	2003	2004	2005	2006	2007	2008	2009	Total	%
Leinster															
Carlow	0	1	0	0	0	1	1	0	1	0	0	0	0	4	1.6
Dublin	4	7	3	5	4	0	1	2	2	2	2	2	3	37	15.0
Kildare	1	3	1	0	2	2	1	0	0	1	0	2	0	13	5.3
Kilkenny	0	0	0	0	0	1	0	1	0	1	1	0	0	4	1.6
Laois	4	1	0	1	1	0	0	0	0	0	1	0	0	8	3.3
Longford	0	0	0	0	0	0	1	0	1	1	2	0	0	5	2.0
Louth	1	1	0	2	1	1	0	0	0	0	0	1	1	8	3.3
Meath	3	0	2	0	3	1	0	0	0	1	2	0	0	10	4.1
Offaly	1	1	1	1	0	0	0	0	0	0	0	0	0	4	1.6
Westmeath	1	0	0	2	0	0	1	0	0	0	0	0	1	5	2.0
Wexford	0	1	2	0	3	0	3	0	0	2	2	1	0	14	5.7
Wicklow	0	3	0	2	1	0	1	0	0	1	0	1	0	9	3.7
Munster															
Clare	1	1	0	0	0	1	2	0	0	0	0	1	0	6	2.4
Cork	4	3	5	2	1	2	0	1	1	3	2	2	0	26	10.6
Kerry	0	0	1	1	0	1	1	0	1	1	0	2	0	8	3.3
Limerick	1	1	0	1	2	1	0	0	1	0	1	2	2	12	4.9
Tipperary	1	2	0	1	1	2	0	0	1	1	2	1	0	12	4.9
Waterford	0	0	1	0	0	1	0	0	0	0	0	1	0	3	1.2
Connacht															
Galway	2	2	2	1	1	0	2	0	0	2	0	2	0	14	5.7
Leitrim	0	0	0	0	0	0	0	0	0	0	0	0	0	0	0.0
Mayo	0	2	1	0	0	1	1	0	0	0	0	1	2	8	3.3
Roscommon	0	1	0	0	0	0	1	1	0	0	1	0	1	5	2.0
Sligo	1	1	0	0	0	0	0	1	1	0	0	0	0	4	1.6
Ulster (part of)															
Cavan	0	0	1	0	0	2	0	0	0	0	0	0	1	4	1.6
Donegal	2	2	2	0	1	1	0	1	0	0	0	1	1	11	4.5
Monaghan	0	1	1	3	5	0	0	0	0	0	0	0	0	10	4.1
TOTAL	27	34	23	22	26	18	16	7	9	16	16	20	12	246	100

Table 14: Children (0-14 years old) killed & seriously injured by county, 1997-2009

County	1997	1998	1999	2000	2001	2002	2003	2004	2005	2006	2007	2008	2009	Total	%
Leinster															
Carlow	0	1	1	1	0	2	1	0	2	0	0	0	2	10	0.8
Dublin	36	36	18	21	22	20	12	13	11	9	11	13	10	232	18.4
Kildare	8	10	2	2	9	2	3	3	2	3	1	4	0	49	3.9
Kilkenny	2	1	1	3	1	2	0	1	1	1	3	0	2	18	1.4
Laois	6	3	3	1	6	3	0	3	2	2	6	0	0	35	2.8
Longford	6	0	0	2	1	1	1	0	1	1	3	0	0	16	1.3
Louth	2	9	1	4	2	3	4	0	3	2	2	2	4	38	3.0
Meath	9	5	7	4	5	4	1	3	1	4	2	3	4	52	4.1
Offaly	8	4	2	1	2	2	2	1	0	3	2	0	1	28	2.2
Westmeath	3	1	2	3	2	1	2	1	1	1	3	0	3	23	1.8
Wexford	6	4	18	2	6	2	6	3	7	6	5	4	0	69	5.5
Wicklow	5	11	3	4	1	2	4	3	2	3	1	1	2	42	3.3
Munster															
Clare	2	1	0	3	1	1	3	3	1	0	3	4	1	23	1.8
Cork	18	18	16	18	10	8	2	10	12	10	8	9	3	142	11.3
Kerry	7	6	10	5	4	2	3	0	7	4	3	4	1	56	4.4
Limerick	5	4	1	5	11	2	0	1	1	3	5	4	4	46	3.7
Tipperary	4	9	2	5	5	4	1	0	6	4	6	5	4	55	4.4
Waterford	3	6	8	5	1	4	2	1	0	4	1	3	0	38	3.0
Connacht															
Galway	9	7	7	6	6	1	8	3	2	3	2	7	2	63	5.0
Leitrim	0	0	1	1	2	0	0	2	1	1	3	0	0	11	0.9
Mayo	8	9	4	2	2	5	5	0	3	1	1	3	2	45	3.6
Roscommon	1	4	5	4	3	0	2	2	0	0	1	0	2	24	1.9
Sligo	2	2	3	2	1	2	3	2	5	1	0	1	1	25	2.0
Ulster (part of)															
Cavan	2	2	1	3	0	2	4	1	4	0	3	0	2	24	1.9
Donegal	9	4	13	1	11	5	2	6	2	2	7	4	2	68	5.4
Monaghan	1	2	8	3	5	0	3	1	1	2	0	1	0	27	2.1
TOTAL	162	159	137	111	119	80	74	63	78	70	82	72	52	1259	100

Working To Save Lives

Údarás Um Shábháilteacht Ar Bhóithre Road Safety Authority

Páirc Ghro Ghleann na Mualtha, Cnoc an tSabhaircín, Bóthar Bhalie Átha Cliath,
Béal an Átha, Co. Mhaigh Eo.
Moy Valley Business Park, Primrose Hill, Dublin Road, Ballina, Co. Mayo.

local: 1890 50 60 or fax: (096) 25 252
email: info@rsa.ie website: www.rsa.ie